

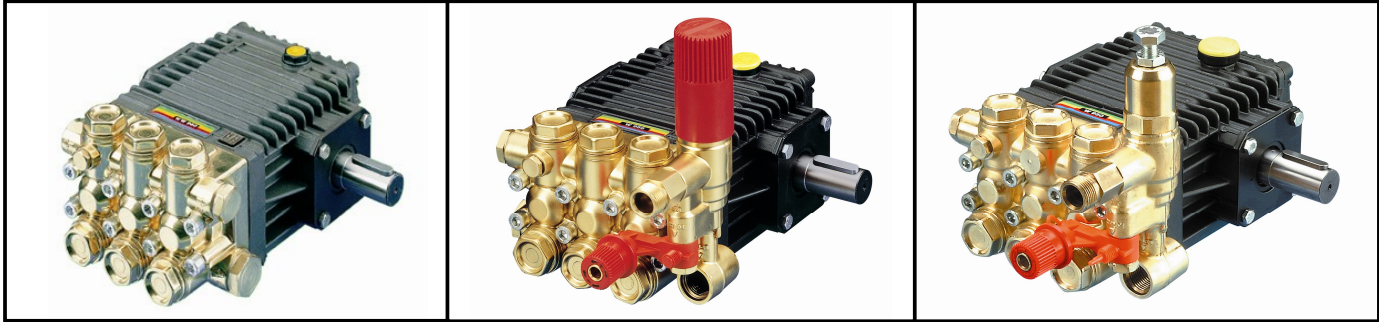


# INTERPUMPGROUP

I GB	ISTRUZIONI D'USO INSTRUCTIONS FOR USE	F D	MODE D'EMPLOI BEDIENUNGSANLEITUNG	E P	INSTRUCCIONES DE USO INSTRUÇÕES DE USO
---------	--	--------	--------------------------------------	--------	---

Questo manuale deve essere letto e compreso in accordo al libretto generico "Istruzioni d'uso e manutenzione".  
 This manual must be read and followed in accordance with the generic "Instructions for Use and Maintenance" booklet.  
 Ce manuel doit être lu et compris en accord avec la notice générale " Mode d'emploi et d'entretien ".  
 Dieses Handbuch ist in Verbindung mit dem allgemeinen Handbuch " Gebrauchs- und Wartungsanleitung" zu lesen und zu verstehen.  
 Este manual debe leerse y comprenderse de acuerdo con el manual general "Instrucciones de uso y mantenimiento"  
 Este manual deve ser lido e interpretado de acordo com o livro genérico "Instruções de uso e manutenção"

# 44




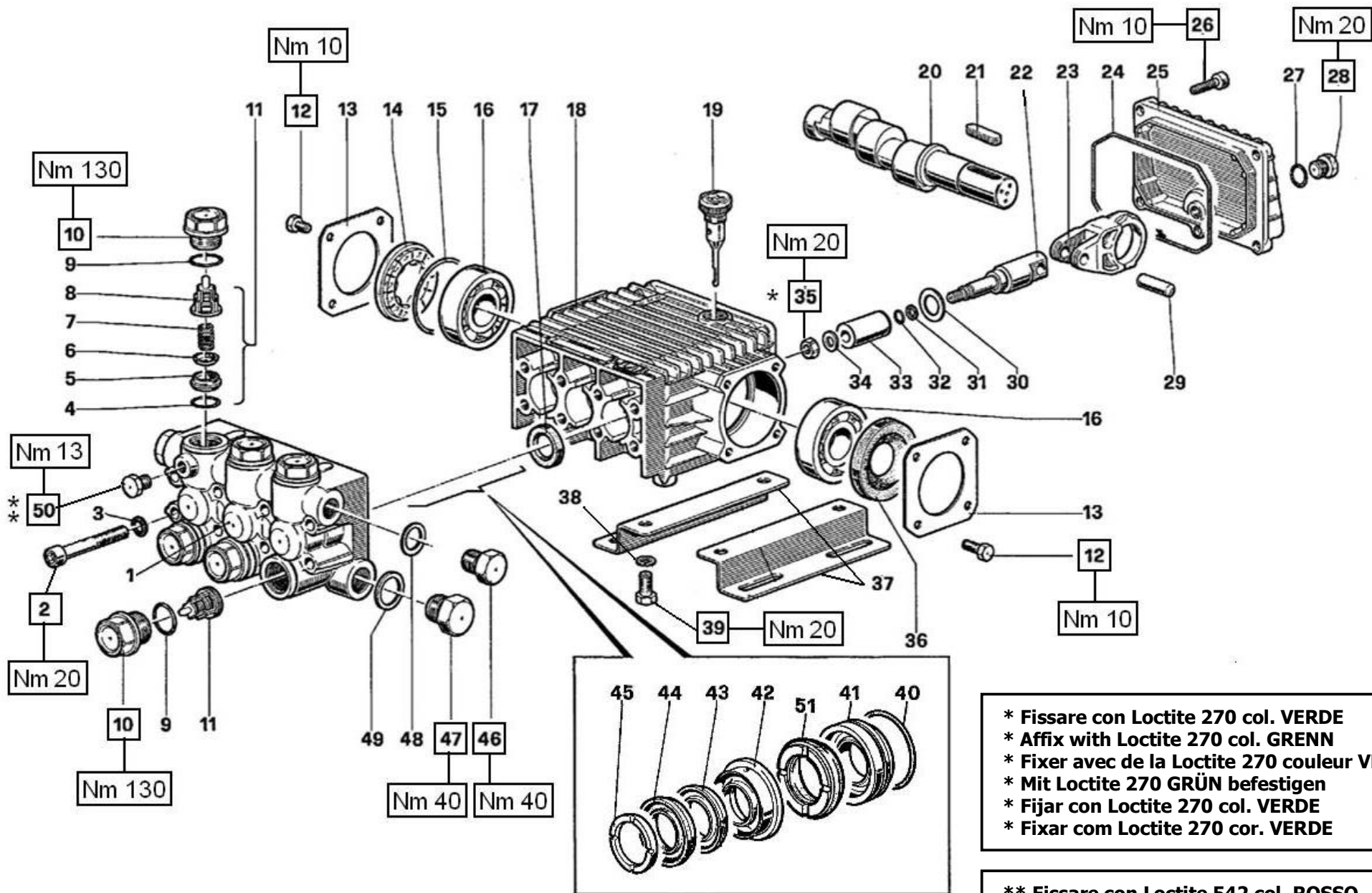
# SERIES

Modello Model Modèle Modell Modelo Modelo	Portata Flow rate Débit Förderstrom Caudal Flujo		Pressione Pressure Pression Druck Presión Pressão			g/m rpm t/m upm r/m r/m	Potenza Power Puissance Leistung Potencia Poder		Peso Weight Poids Gewicht Peso Peso		
	L/min	gpm	bar	MPa	psi		Hp	kW	Kg	Ibs	
W150	8	2.11	150	15	2175	1450	3.0	2.20	7.9	17.4	0.4
W130	9.5	2.11	130	13	1885	1450	3.0	2.20	7.9	17.4	0.4
W130HH	9.5	2.11	130	13	1885	1450	3.0	2.20	7.9	17.4	0.4
W170	9.5	2.50	170	17	2465	1450	4.0	2.94	7.9	17.4	0.4
W112	12	2.50	100	10	1450	1450	3.0	2.20	7.7	17.0	0.4
W140	12	3.17	140	14	2030	1450	4.0	2.94	7.7	17.0	0.4
W140HH	12	3.17	140	14	2030	1450	4.0	2.94	7.7	17.0	0.4
W200	12	3.17	200	20	2900	1450	6.0	4.41	7.7	17.0	0.4
W97	14	3.69	90	9	1300	1450	3.0	2.20	7.7	17.0	0.4
W124	14	3.69	120	12	1750	1450	4.0	2.94	7.7	17.0	0.4
W154	14	3.69	150	15	2175	1450	5.5	4.04	7.7	17.0	0.4
W154HH	14	3.69	150	15	2175	1450	5.5	4.04	7.7	17.0	0.4
W204	14	3.69	200	20	2900	1450	7.3	5.37	7.7	17.0	0.4
W950	9.5	2.50	165	16.5	2400	1750	4.0	2.94	7.9	17.4	0.4
W951	11.5	3.04	103	10.3	1500	1750	3.0	2.20	7.9	17.4	0.4
W952	11.5	3.04	138	13.8	2000	1750	4.0	2.94	7.9	17.4	0.4
W953	11.5	3.04	172	17.2	2500	1750	5.0	3.67	7.9	17.4	0.4
W954	13.6	3.60	90	9	1300	1750	3.0	2.20	7.7	17.0	0.4
W955	13.6	3.60	117	11.7	1700	1750	4.0	2.94	7.7	17.0	0.4
W956	13.6	3.60	145	14.5	2100	1750	5.0	3.67	7.7	17.0	0.4
W14200	13.6	3.60	200	20	2900	1750	7.0	5.14	7.7	17.0	0.4
W957	15.9	4.20	76	7.6	1100	1750	3.0	2.20	7.7	17.0	0.4
W958	15.9	4.20	96	9.6	1400	1750	4.0	2.94	7.7	17.0	0.4
W959	15.9	4.20	124	12.4	1800	1750	5.0	3.67	7.7	17.0	0.4
W16180	15.9	4.20	180	18	2610	1750	7.5	5.51	7.7	17.0	0.4



**44****S  
E  
R  
I  
E  
S**

Modello Model Modèle Modell Modelo Modelo	Portata Flow rate Débit Förderstrom Caudal Flujo		Pressione Pressure Pression Druck Presión Pressão			g/m rpm t/m upm r/m r/m	Potenza Power Puissance Leistung Potencia Poder		Peso Weight Poids Gewicht Peso Peso		
	L/min	gpm	bar	MPa	psi		Hp	kW	Kg	Ibs	
WW186	13	3.43	180	18	2610	2800	5.5	4.04	7.9	17.4	0.4
WW206	13	3.43	200	20	2900	2800	7.5	5.51	7.9	17.4	0.4
WW116	15	3.96	110	11	1600	2800	4.0	2.94	7.9	17.4	0.4
WW156	15	3.96	150	15	2175	2800	5.5	4.04	7.9	17.4	0.4
WW209	15	3.96	200	20	2900	2800	7.5	5.51	7.9	17.4	0.4
WW189	16	4.22	180	18	2610	2800	7.5	5.51	7.9	17.4	0.4
WW136	17	4.50	130	13	1885	2800	5.5	4.04	7.9	17.4	0.4
WW176	17	4.50	170	17	2465	2800	7.5	5.51	7.9	17.4	0.4
WW963	11	2.90	250	25	3600	3400	7.5	5.51	8.7	19.2	0.4
WW964	13	3.43	250	25	3600	3400	8.5	6.25	8.7	19.2	0.4
WW960	13.2	3.48	172	17.2	2500	3400	5.5	4.04	8.7	19.2	0.4
WW961	15	3.96	172	17.2	2500	3400	6.5	4.77	8.7	19.2	0.4
WW965	15	3.96	250	25	3600	3400	10	7.35	8.7	19.2	0.4
WW962	17.4	4.60	172	17.2	2500	3400	7.5	5.51	8.7	19.2	0.4



\* Fissare con Loctite 270 col. VERDE  
 \* Affix with Loctite 270 col. GREEN  
 \* Fixer avec de la Loctite 270 couleur VERT  
 \* Mit Loctite 270 GRÜN befestigen  
 \* Fijar con Loctite 270 col. VERDE  
 \* Fixar com Loctite 270 cor. VERDE

\*\* Fissare con Loctite 542 col. ROSSO  
 \*\* Affix with Loctite 542 col. RED  
 \*\* Fixer avec de la Loctite 542 couleur ROUGE  
 \*\* Mit Loctite 542 ROT befestigen  
 \*\* Fijar con Loctite 542 col. ROJO  
 \*\* Fixar com Loctite 542 cor. VERMELHA

**KIT RICAMBI – SPARE KITS**

KIT Nr.	OTTONE BRASS				NICKEL					PISTONE- PISTON Ø15					PISTONE- PISTON Ø18				
	KIT 23	KIT 123	KIT 124	KIT 158	KIT 88	KIT 89	KIT 90	KIT 125	KIT 130	KIT 126	KIT 127	KIT 128	KIT 129	KIT 131					
Posizioni incluse Positions included	17	4 – 5 6 – 7 8 – (11)	9 - 10	9 - 10	43 – 44 51	42	45	40 – 41	40 – 41 42 – 43 44 – 45 51	40 – 41	43 – 44 51	42	45	40 – 41 42 – 43 44 – 45 51					
Nr. Pcs.	3	6	6	6	3	3	6	3	1	3	3	3	6	1					

**W97 - W112 - W124 - W130**  
**W140 - W150 - W154 - W170**  
**W200 – W204 - W950 - W951**  
**W952 - W953 - W954 - W955**  
**W956 - W957 - W958 - W959**  
**W14200 - W16180 - WW116**  
**WW136 - WW156 - WW176**  
**WW186 - WW189 - WW206**  
**WW209 - WW960 - WW961**  
**WW962**

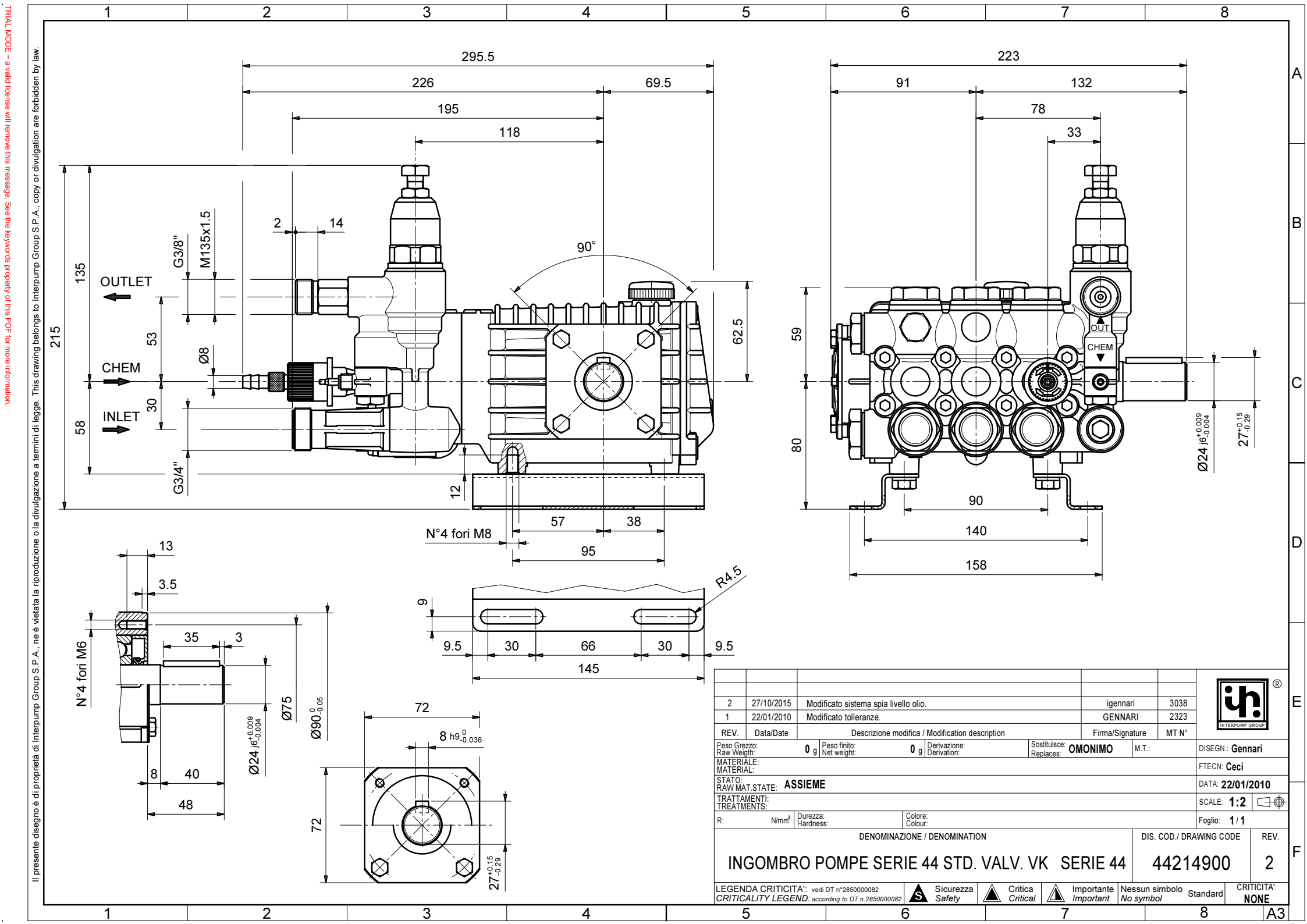
	PISTONE – PISTON Ø15	PISTONE – PISTON Ø18
OTTONE BRASS	W130 – W150 – W170 W950 – W951 – W952 W953 – WW116 – WW136 WW176 - WW186 - WW189 - WW206 WW209 - WW960 - WW961 - WW962	W97 – W112 - W124 W140 - W154 – W954 W955 – W956 - W957 W958 - W959
NICKEL		W200 – W204 W14200 - W16180

POS	COD.	DESCRIZIONE – DESCRIPTION - KIT	NR
1	44.1200.41 44.1204.41 44.1207.41	Testata Ø 15 Testata Ø 18 Testata Ø 18 – NICKEL	1
2	99.3175.00	Vite M8x60 UNI 5931	8
3	96.7014.00	Rosetta Ø 8.4x13x0.8	8
4	90.3841.00	OR Ø 17.13x2.62 (3068)	123 6
5	36.2003.66	Sede valvola	123 6
6	36.2001.76	Valvola	123 6
7	94.7376.00	Molla Ø 9.4x14.8	123 6
8	36.2025.51	Guida valvola	123 6
9	90.3847.00	OR Ø 20.24x2.62 (3081) 90 Sh.	124-158 6
10	98.2226.00 98.2225.00	Tappo M24x1.5x17 Tappo M24x1.5x17 – NICKEL	124 158 6
11	36.7115.01	Gruppo valvola aspiraz./mand.	123 6
12	99.1807.00	Vite M6x10 UNI 5739	8

POS	COD.	DESCRIZIONE – DESCRIPTION - KIT	NR
13	50.1500.74	Coperchio carter	2
14	44.2118.01	Distanziale con indicatore	1
15	90.4097.00	OR Ø 55.56x3.53 (159)	1
16	91.8331.00	Cuscinetto a sfere 6305 – Spec.	2
17	90.1614.00	Anello rad. Ø 20x30x5	23 3
18	44.0100.22	Carter pompa	1
19	98.2103.00	Tappo carico olio G 3/8"	1
20	44.0200.35 44.0203.35 44.0205.35 44.0206.35	Albero C.9.5 – WW186 WW206 Albero C.11 – W112 W140 W150 W950 W954 W955 W956 WW116 WW156 WW209 W200 W14200 Albero C.12 – WW189 Albero C.13 – W97 W124 W130 W154 W170 W951 W952 W953 W957 W958 W959 WW136 WW176 W204 W16180	1
21	91.4892.00	Linguetta 8x7x35 UNI 6604	1
22	44.0500.66	Guida pistone	3
23	44.0300.22	Biella	3
24	90.3920.00	OR Ø 101.27x2.62 (3400)	1
25	44.1600.22	Coperchio posteriore	1
26	99.1837.00	Vite M6x14 UNI 5931	5
27	90.3585.00	OR Ø 10.82x1.78 (2043)	1
28	98.2042.50	Tappo G 1/4"x9 TE17 – Zinc.	1
29	97.7340.00	Spinotto Ø 10x29.5	3
30	96.7350.00	Rosetta Ø 16x27x1.7/0.7	3
31	90.5022.00	Anello antiest. Ø 6.2x9x1.5	3

POS	COD.	DESCRIZIONE – DESCRIPTION - KIT	NR
32	90.3572.00	OR Ø 5.28x1.78 (2021) – Spec.	3
33	52.0400.09 44.0401.09	Pistone Ø 15 Pistone Ø 18	3
34	44.2115.70	Rosetta Ø 8 con collare	3
35	92.2216.00	Dado M8x13x5 - INOX	3
36	90.1641.00	Anello rad. Ø 25x62x10	1
37	50.2000.74	Piedino	2
38	96.7016.00	Rosetta Ø 8.4 UNI 1751	4
39	99.3037.00	Vite M8x16 UNI 5739	4
40	90.3612.00	OR Ø 31.47x1.78 (2125)	125-126 130-131 3
41	44.0800.70 44.0801.70	Anello di fondo Ø 15 Anello di fondo Ø 18	125-130 126-131 3
42	52.2166.70 44.2161.70	Anello intermedio Ø 15 Anello intermedio Ø 18	89-130 128-131 3
43	90.2622.00 90.2683.00	Anello RESTOP Ø 15 Anello RESTOP Ø 18	88-130 127-131 3
44	90.2620.00 90.2682.00	Anello tenuta Ø 15 HP Anello tenuta Ø 18 HP	88-130 127-131 3
45	51.1000.51 44.1001.51	Anello di testa Ø 15 Anello di testa Ø 18	90-130 129-131 3
46	98.2100.00	Tappo G 3/8"x13	1
47	98.2176.00	Tappo G 1/2"x10	1
48	96.7380.00	Rosetta Ø 17.5x23x1.5	1
49	96.7514.00	Rosetta Ø 21.5x27x1.5	1
50	98.1966.00	Tappo G 1/8"x8	1
51	90.2617.00 90.2684.00	Anello tenuta Ø 15 LP Anello tenuta Ø 18 LP	88-130 127-131 3





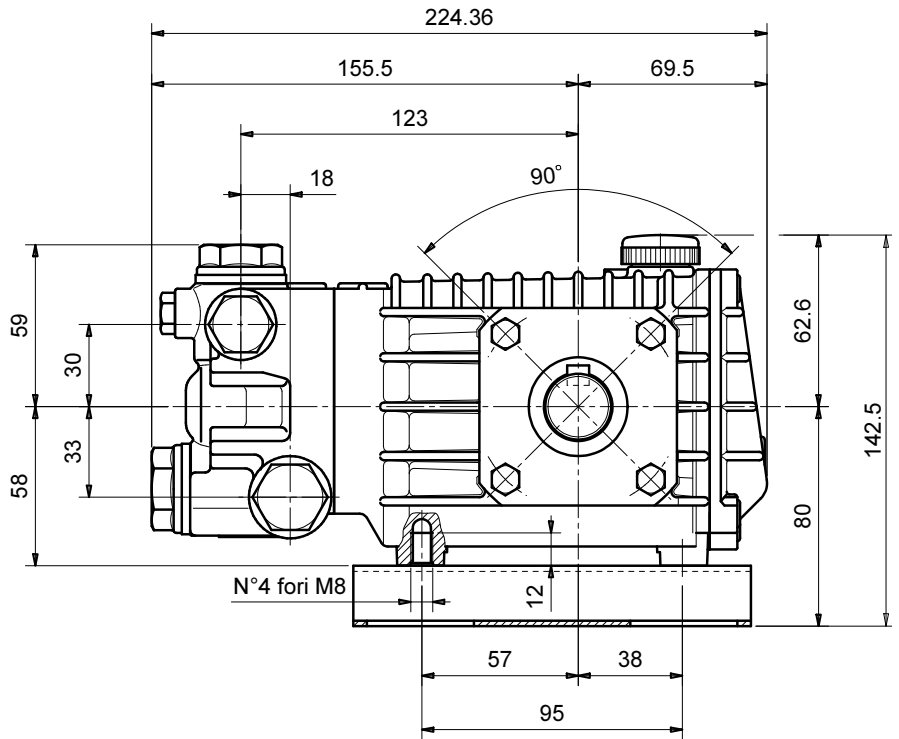
2	27/10/2015	Modificato sistema spia livello olio.	igennari	3038
1	22/01/2010	Modificato tolleranze.	GENNARI	2323
REV.	Data/Date	Descrizione modifica / Modification description	Firma/Signature	MT N°
Peso Grezzo: Raw Weight: 0 g		Peso finito: Net weight: 0 g	Derivazione: Derivation:	Sostituisce: Replaces: OMONIMO
MATERIALE: MATERIAL:		STATO: RAW MAT.STATE: ASSIEME	DISEGN: Gennari	
TRATTAMENTI: TREATMENTS:		R: N/mm <sup>2</sup> Durezza: Hardness:	Colore: Colour:	M.T.: M.T.:
DENOMINAZIONE / DENOMINATION			DIS. COD. / DRAWING CODE	REV.
INGOMBRO POMPE SERIE 44 STD. VALV. VK SERIE 44			44214900	2
LEGENDA CRITICITA': vedi DT n°285000082 CRITICALITY LEGEND: according to DT n.285000082				CRITICITA': NONE
Sicurezza Safety		Critica Critical	Importante Important	Nessun simbolo No symbol

Il presente disegno è di proprietà di Interpump Group S.P.A., ne è vietata la riproduzione o la divulgazione a termini di legge. This drawing belongs to Interpump Group S.P.A., copy or divulgation are forbidden by law.

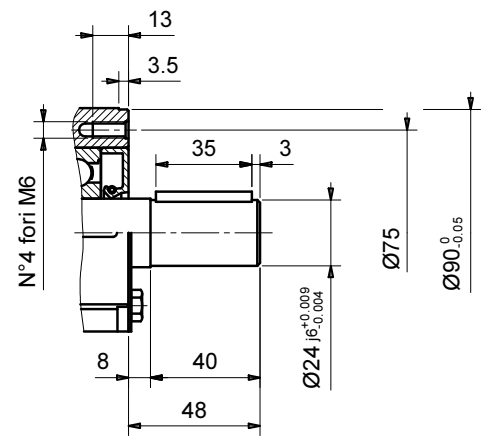
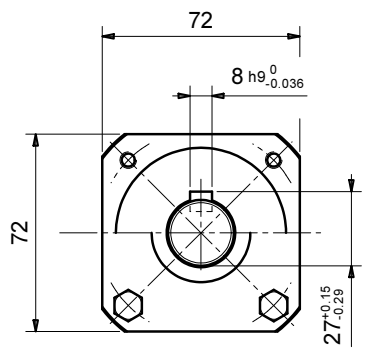
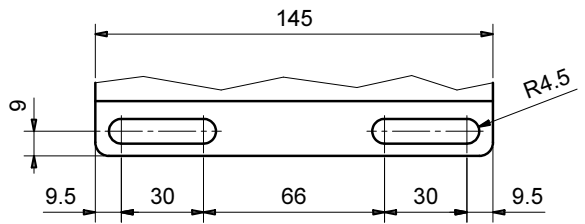
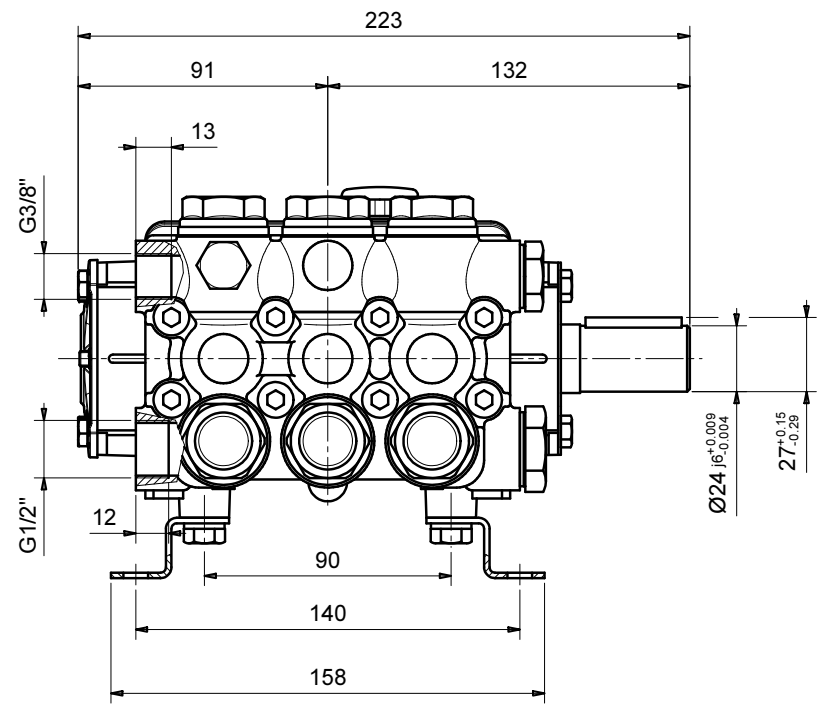
RITAL MODE - a valid license will remove this message. See the keywords property of this PDF for more information.

RITALI MODE - a valid license will remove this message. See the keywords property of this PDF for more information.

Il presente disegno è di proprietà di Interpump Group S.P.A., ne è vietata la riproduzione o la divulgazione a termini di legge. This drawing belongs to Interpump Group S.P.A., copy or divulgation are forbidden by law.



OUTLET  
←  
INLET  
→



2	27/10/2015	Modificato sistema spia livello.	igennari	3038
1	21/01/2010	Rifatto a CAD ed aggiornate tolleranze.	GENNARI	2323
REV.	Data/Date	Descrizione modifica / Modification description	Firma/Signature	MT N°
Peso Grezzo: Raw Weight: 0 g		Peso finito: Net weight: 0 g		Derivazione: Derivation:
MATERIALE: MATERIAL:		Sostituisce: Replaces: OMONIMO		M.T.:
STATO: RAW MAT.STATE: ASSIEME				DISEGN: Gennari
TRATTAMENTI: TREATMENTS:				FTECN: Ceci
R: N/mm² Durezza: Hardness: Colore: Colour:				DATA: 21/01/2010
DENOMINAZIONE / DENOMINATION				SCALE: 1:2
DIS. COD. / DRAWING CODE				Foglio: 1 / 1



INGOMBRO POMPE SERIE 44 - STD.      SERIE 44      44214000      2

LEGENDA CRITICITA': vedi DT n°2850000082      **S** Sicurezza Safety      **C** Critica Critical      **I** Importante Important      Nessun simbolo No symbol      Standard      CRITICITA': NONE