

## TPHT02

### Features/Benefits

- 316 Stainless Steel construction.
- Non marking blue rubber wheels.
- Robust and stable.
- Available with or without a hose reel.
- Reduce trip hazards.
- The trolley protects hose from being crushed or damaged
- Hose is kept neatly off the floor when not in use preventing wear and tear
- The trolley allows the user to easily move around large facilities.
- Compliant with food safety standards

British manufactured stainless steel hose reel trolley. An excellent trolley for cleaning in the food industry, industrial grade and designed to withstand the demands of commercial environments.

#### 316 Stainless Steel Handle

Smooth non-porous, corrosion-resistant and easy to sanitise.

#### Stainless Steel design

Manufactured from 316 stainless steel ensuring compliance with food safety standards.



#### Rubber feet

Non-marking rubber feet provide extra stability when the trolley is stationary.

#### Pre-drilled holes

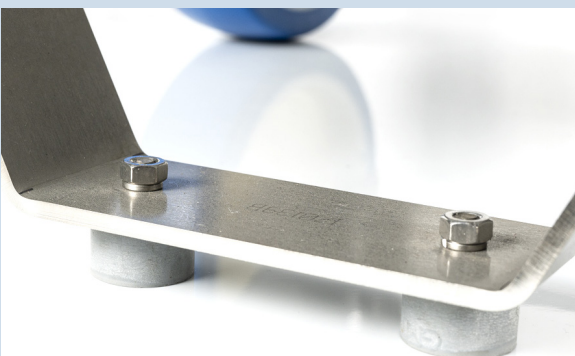
Allows for easy attachment of the RM Suttner 73950 hose reel.

#### Industrial Wheels

Non marking heavy duty wheels for easier manoeuvrability.



Non marking wheels



Non marking rubber feet

Model	TPHT02
Weight	13.86 kg
Dimensions (LxWxH)	(D)615mm x (W)471mm x (H)970mm
Material	316 Stainless Steel
Commodity Code	8716800000

# TecPro

Scan for more information

