

**Completely
chemical-free!**



Ideal for professional
service provider in the
**garden-, municipal
and building cleaning
industry**

Pipe with handle: wall thickness
of 3 mm and length of 1,100 mm
for professional applications

**Suitable for
low and high
pressure**

ST-2605

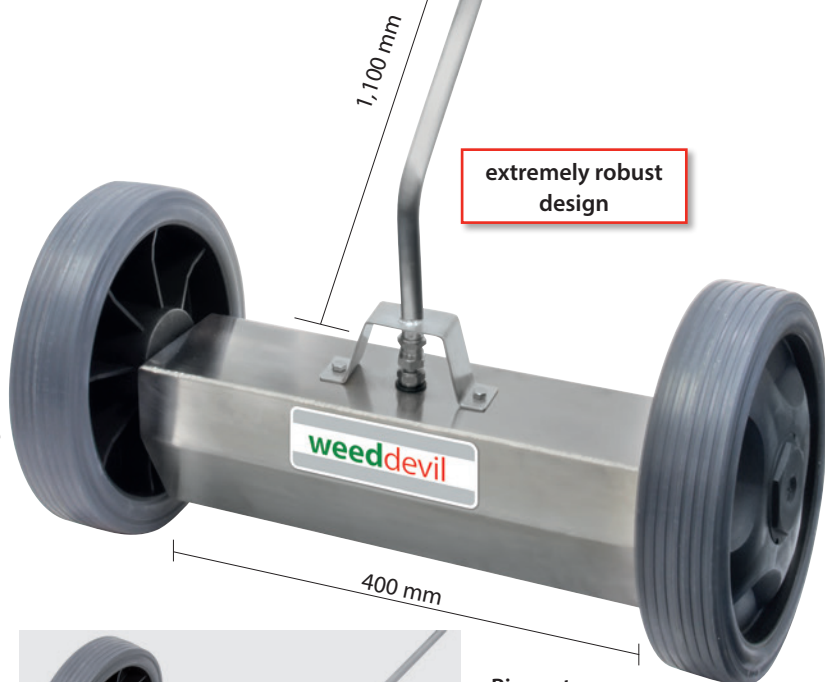
LTF

Our spray gun
ST-2605 with
the patented LTF
technology is
recommended for
effortless working.

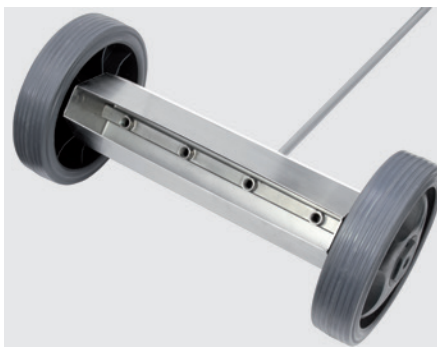
**Useable at the
left or right:**
the handle at the
side optimises
the handling
and protects
during hot water
applications.

The professional surface cleaner for sustainable weed control

- completely made out of stainless steel
- a working width of 400 mm
- 4 nozzles 1/4" M NPT are required
- for the application you need a hot-water device that works with a water temperature of at least 90 °C
- 1/4" nozzles have the ideal spraying angle of 65°
- robustly industrial castors: Ø 260 mm
- energetically developed housing for effective use of hot water
- swivelling application on sloping and vertical areas is possible
- suitable for low and high pressure applications: 0 - 350 bar
- max. temperature: 120 °C
- working temperature: 90 °C - 99 °C



**extremely robust
design**



Big castors:
easy manoeuvring in curves and around
obstacles, even on uneven undergrounds.

At the underside: concentrated and
well-directed hot water without any
temperature loss by an optimally
designed housing having a perfect
cleaning distance.

R+M Nr.	material	castors ø	working width	inlet	outlet	pressure	temperature	weight	height / width
200 097 700	stainl. steel	260 mm	400 mm	1/4" F	4 x 1/4" F	max. 350 bar	120 °C	7.4 kg	1,250 / 530 mm

Important things to know about thermal weed control

Mode of action: In addition to steam and burning the use with hot water is twenty times as effective due to the high conductivity. Hot water does not only remove the plant's surface but also the root. The plant proteins are destroyed at a temperature of 42 °C.

Application: 3 to 4 applications are recommended during the first year. The number of applications during the second year can be significantly reduced as the plants are very weak. Visible results are noticed only after a few days.

Recommendation: The application is most efficient if it is effected in the afternoon as the plant is more vulnerable after the absorption of water. Please start the applications in the spring as the young and still small parts of the plants are more sensitive in this season. Please move the weeddevil slowly over the areas to be treated and repeat the process after a few days in case of older plants.

Lance: ST-29.2
Cool & Compact
with side handle



ST-2605 **LTF**

Our spray gun ST-2605 with the patented LTF technology is recommended for effortless working.

Also for use in
low pressure
application

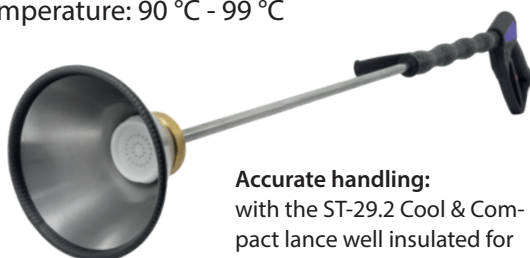
Completely
chemical-free!



For sustainable weed control and ideal for individual treatment

- For pumps up to max. 25 l / min.: If necessary, the flow restrictor 200 097 750 has to be used
- Working width 150 mm
- For hot water use of up to 120 °C
- for the application you need a hot-water device that works with a water temperature constantly of at least 90 °C
- Extremely robust cone and lightweight with 0.52 kg
- Working temperature: 90 °C - 99 °C

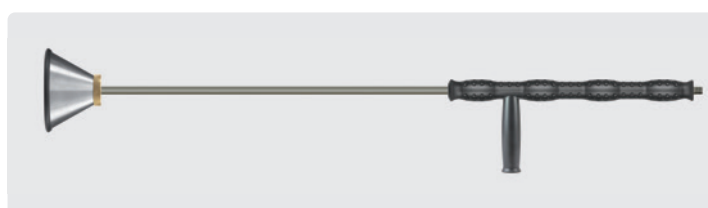
Robust cone:
made out of
stainless steel
and brass.



Accurate handling:
with the ST-29.2 Cool & Compact lance well insulated for hot water applications.



R+M Nr.	C	I	Ø	M
500 097 100	1/4" F	150	120	stainless steel / brass
500 097 101	M18x1.5 F	150	120	stainless steel / brass
500 097 102	TR20x6 F	150	120	stainless steel / brass



R+M Nr.	C	I	Ø	M
500 097 103	1/4" M	1.150	120	stainless steel / brass