



Hygiene Catalogue



Hygiene Catalogue

This catalogue is intended to give you access to the best quality products dedicated to the food hygiene industry.

We have been supplying the cleaning industry for nearly 40 years, and over that time we have built up a comprehensive range of products suitable for the industry.

This is backed up with in-depth product knowledge, technical information and relevant certification, as well as our huge UK stocks & standard next day delivery service.

One of the most recent and ground breaking products we sell, is our Hygiene Ultra 40 hose. This unique hose comes with an antimicrobial impregnated cover, which kills micro-organisms, such as bacteria, and stops future growth.

This catalogue only represents a small section of our product range, so if there is something that you require but cannot find, then please do not hesitate in getting in touch.



ST3225 Inline wash gun. Designed specifically for the food processing cleaning environment.

Find this product on page 05



Hygiene Ultra 40. The 40 bar wash down hose with an antimicrobial cover. Available in 4 colours.

Find this product on page 14



Suttner Foam Injectors. Range of stainless steel foam injectors, suitable for foam, rinse and sanitising applications

Find these products on pages 18-21



Hygiene Trolleys. A range of stainless steel trolleys which are able to carry chemicals, foam injectors and hose reels.

Find this product on page 24

05 Low Pressure Wash Guns



06 Med-High Pressure Wash Guns



07 Rinse Lances



08 Lance Accessories



09 - 10 Nozzles



12 Surface Cleaners



12 - 14 Food Grade Hoses



15 Stainless Steel Threaded Adaptors



16 Stainless Steel Quick Couplings



17 - 21 Foam Injector Units



22 - 23 Foam Lances & Nozzles



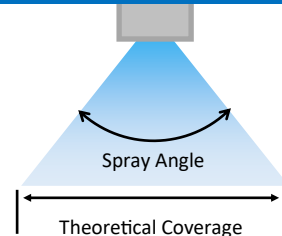
24 Multifunction Foam & Reel Trolleys



25 - 26 Stainless Hose Reels



27 Technical Information





HIGH

High Pressure

70 bar +

In environments such as poultry sheds, abattoirs, and agricultural sheds, the use of high pressure is required. This high pressure water can also be heated and chemicals added to aid with the cleaning process.

Advantages:

- Easier removal of stubborn dirt & grime
- A wider range of accessories available

70

Medium Pressure

25 - 70 bar

Systems operating within these pressure perimeters, are usually found in primary food processing areas, such as pack houses. A well designed system, coupled with the right accessories, can be just as effective as using high pressure.

Advantages:

- Lower airborne water/chemical droplets
- Reduced cross contamination
- Reduced water ingress

MEDIUM

25

Low Pressure

0 - 25 bar

These systems will usually see in an increase in flow rates to compensate for the lower pressure ratings. These systems will usually run using booster pumps and pre heated water using reclaimed waste thermal energy.

Advantages:

- Reduced splash back
- Further reductions in airborne water droplets
- Reduced cross contamination

LOW

0

Low Pressure Wash Guns



PRE-SPRAY CHEMICAL GUN

Chemical pre-spray lance with chemically resistant trigger. Great for the initial lightly coating of appliances and machinery with a pre wash substance. Nozzle required.

Lance Length = 300mm
Inlet 1/2" F. Max 25bar, 30lpm, 50°C

Part No: 200510560



SHOWER HEAD

Plastic and stainless steel inline shower head nozzle, which is ideal for low pressure rinsing, at close range. Ideal for rinsing boots, containers and work surfaces.

Inlet 1/2" F. Max 8bar, 60°C

Part No: 500101



SMALL ERGONOMIC GUN

Lovely ergonomic and easy to hold rubber covered spray gun. This extremely lightweight (480g) yet robust gun, is ideal for those cleaning jobs where access is a little limited. Also great for those who's hands are on the smaller side.

Inlet: 1/2" F. Max 25bar, 35lpm, 95°C

Part No: TEC010 Brass Version
TEC011 Stainless Steel Version



PALM TRIGGER GUN

Brass bodied low pressure washdown gun with a palm operated trigger and adjustable spray pattern.

Inlet: 1/2" F. Max 25bar, 25lpm, 95°C

Part No: TEC014



RUBBER COVERED GUNS

Brass bodied low pressure washdown guns with heavy duty rubber covers. Perfect for where the guns are constantly being dropped.

Inlet: 1/2" F. Max 24bar, 100lpm, 50°C

Part No: Blue TEC005
Red TEC006



RUBBER COVERED GUN + TRIGGER GUARD

Brass bodied low pressure washdown gun with heavy duty rubber cover, and the added advantage of having a trigger guard to protect the users fingers.

Inlet: 1/2" F. Max 24bar, 100lpm, 50°C

Part No: GS1200PNP



RUBBER ENCASED BALL VALVE

Stainless steel ball valve encased in a durable ergonomic rubber protective cover. Comes with an easy to turn handle.

Inlet: 1/2" F. Max 60bar, 100lpm, 95°C

Part No: GS7500 1/2" F Outlet
GS7510 QRC Coupling





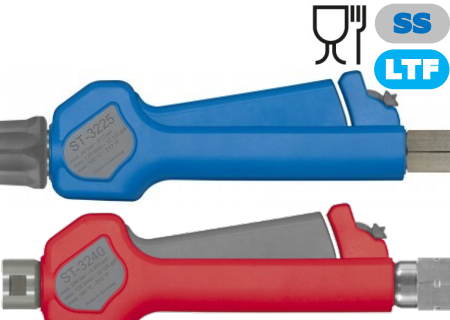

FOOD SAFE INLINE GUN

The ST3225 guns have been specifically designed for use within the food industry. These easy to handle, easy to hold guns can be used for a wide range of cleaning tasks, from foaming to rinsing. Stainless steel body with (EC) No. 1935/2004 compliant plastic casing. Suitable for up to 120lpm with a progressive and dampened trigger operation.

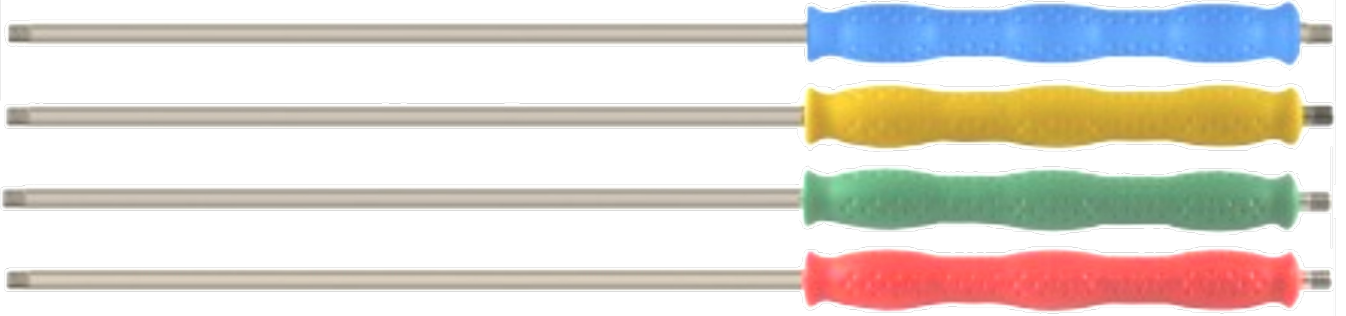
Inlet: 1/2" F. Max 24bar, 120lpm, 100°C

Part No: 203225645 1/2" F Swivel Inlet & Outlet
203225650 1/2" F Swivel Inlet & ST3100 QRC Outlet

Medium & High Pressure Wash Guns

Max 310bar, 45lpm, 150°C	Max 310bar, 45lpm, 150°C	Max 250bar, 60lpm, 150°C																		
 <p>ST2300</p> <p>Brass high pressure washer guns with ergonomic design and exceptional reliability. Available with or without a quick release outlet coupling.</p> <table border="0"> <tr> <td>202300500</td> <td>3/8" F Inlet, 1/4" F Outlet</td> </tr> <tr> <td>202300550</td> <td>3/8" F Swivel Inlet</td> </tr> <tr> <td>202300560</td> <td>3/8" F Inlet x KW QRC Outlet</td> </tr> <tr> <td>202300570</td> <td>3/8" F Swivel x KW QRC Outlet</td> </tr> </table>	202300500	3/8" F Inlet, 1/4" F Outlet	202300550	3/8" F Swivel Inlet	202300560	3/8" F Inlet x KW QRC Outlet	202300570	3/8" F Swivel x KW QRC Outlet	 <p>ST2600</p> <p>Similar to the ST2300 range of guns, but the ST2600 range has the benefit of the easy pull trigger mechanism. This makes it 40% easier to pull and 90% easier to hold. Perfect for longer use applications</p> <table border="0"> <tr> <td>202600500</td> <td>3/8" F Inlet, 1/4" F Outlet</td> </tr> <tr> <td>202600550</td> <td>3/8" F swivel Inlet</td> </tr> <tr> <td>202600545</td> <td>3/8" F Swivel + KW QRC Outlet</td> </tr> </table>	202600500	3/8" F Inlet, 1/4" F Outlet	202600550	3/8" F swivel Inlet	202600545	3/8" F Swivel + KW QRC Outlet	 <p>EASYFARM ST2620</p> <p>The EASYFARM ST2620 wash gun is a high flow, high pressure unit especially designed for the cleaning of cattle trailers, hoppers and animal sheds. Available with two variants of quick release coupling.</p> <table border="0"> <tr> <td>202620655</td> <td>KW Style QRC</td> </tr> <tr> <td>202620650</td> <td>ST3100 Style QRC</td> </tr> </table>	202620655	KW Style QRC	202620650	ST3100 Style QRC
202300500	3/8" F Inlet, 1/4" F Outlet																			
202300550	3/8" F Swivel Inlet																			
202300560	3/8" F Inlet x KW QRC Outlet																			
202300570	3/8" F Swivel x KW QRC Outlet																			
202600500	3/8" F Inlet, 1/4" F Outlet																			
202600550	3/8" F swivel Inlet																			
202600545	3/8" F Swivel + KW QRC Outlet																			
202620655	KW Style QRC																			
202620650	ST3100 Style QRC																			
Max 60bar, 100lpm, 150°C	Max 60 or 310bar, 120lpm, 100°C	Max 80bar, 80lpm, 150°C																		
 <p>ST3100</p> <p>The ST3100 gun is a high flow foam gun. This gun is unique as it has a fully dampened trigger which eliminates the risk of water hammer. The stainless steel internals are protected from damage by the robust cover which is made from (EC) No. 1935/2004 compliant plastic. 1/2" F Inlet with ST3100 QRC Outlet.</p> <table border="0"> <tr> <td>2023100820</td> <td>ST3100 High Flow Foam Gun</td> </tr> </table>	2023100820	ST3100 High Flow Foam Gun	 <p>ST3225 & ST3240</p> <p>Specifically designed for use within the food factory environment, these easy to handle in line guns are ideal for number of cleaning tasks. Due to their relatively small size, they are ideal for use, in those hard to reach areas.</p> <table border="0"> <tr> <td>203225545</td> <td>1/2" F Inlet & Outlet Version</td> </tr> <tr> <td>203225550</td> <td>1/2" F Inlet & ST3100 QRC Outlet</td> </tr> <tr> <td>203240500</td> <td>Red 1/2" F Inlet & Outlet (310 bar)</td> </tr> </table>	203225545	1/2" F Inlet & Outlet Version	203225550	1/2" F Inlet & ST3100 QRC Outlet	203240500	Red 1/2" F Inlet & Outlet (310 bar)	 <p>ST2725</p> <p>This stainless steel gun has the benefit of having a chemically resistant valve mechanism and a PEEK valve seat. Couple this with the LTF trigger (40% easier to pull, 90% easier to hold), makes this gun a very versatile unit for a host of applications.</p> <table border="0"> <tr> <td>202725535</td> <td>ST2725 1/2" F Outlet</td> </tr> <tr> <td>202725550</td> <td>ST2725 + ST3100 QRC Outlet</td> </tr> </table>	202725535	ST2725 1/2" F Outlet	202725550	ST2725 + ST3100 QRC Outlet						
2023100820	ST3100 High Flow Foam Gun																			
203225545	1/2" F Inlet & Outlet Version																			
203225550	1/2" F Inlet & ST3100 QRC Outlet																			
203240500	Red 1/2" F Inlet & Outlet (310 bar)																			
202725535	ST2725 1/2" F Outlet																			
202725550	ST2725 + ST3100 QRC Outlet																			
Max 125bar, 80lpm, 150°C	Max 310bar, 45lpm, 150°C	 <p>Replacement Colour Coded Gun Covers</p> <p>These HACCP compliant replacement gun covers are available in 4 different colours:</p> <table border="0"> <tr> <td>Red</td> <td>202300471</td> </tr> <tr> <td>Yellow</td> <td>202300472</td> </tr> <tr> <td>Green</td> <td>202300473</td> </tr> <tr> <td>Blue</td> <td>202300474</td> </tr> </table> 	Red	202300471	Yellow	202300472	Green	202300473	Blue	202300474										
Red	202300471																			
Yellow	202300472																			
Green	202300473																			
Blue	202300474																			
 <p>ST2720</p> <p>Suitable for applications that require large water flows at high pressure. The PEEK valve cone also allows this gun to be operated in low pressure conditions as the PEEK cone allows for a softer shut off, therefore minimising water hammer damage.</p> <table border="0"> <tr> <td>202720530</td> <td>High Flow, High Pressure Gun</td> </tr> </table>	202720530	High Flow, High Pressure Gun	 <p>ST2700</p> <p>This stainless gun is designed for industrial applications where the use of high pressure water is essential. Using the LTF trigger mechanism this gun is easy to use for long periods of time.</p> <table border="0"> <tr> <td>202700500</td> <td>3/8" F Inlet, 1/4" F Outlet</td> </tr> <tr> <td>202700575</td> <td>3/8" F Swivel Inlet, KW Style QR Outlet</td> </tr> </table>	202700500	3/8" F Inlet, 1/4" F Outlet	202700575	3/8" F Swivel Inlet, KW Style QR Outlet													
202720530	High Flow, High Pressure Gun																			
202700500	3/8" F Inlet, 1/4" F Outlet																			
202700575	3/8" F Swivel Inlet, KW Style QR Outlet																			

Rinse Lances



HACCP Compliant Stainless Lances

Range of 900mm stainless steel lances with 300mm coloured ergonomic grip. The coloured grips makes these lances a perfect match for the colour coded guns, nozzle protectors and hoses that we offer, and are fully HACCP compliant. Max 400bar, 150°C

Blue 900mm Lance 1/4" M	200029315
Yellow 900mm Lance 1/4" M	200029316
Green 900mm Lance 1/4" M	200029317
Red 900mm Lance 1/4" M	200029318



ST001 Stainless Steel Pipe

1/4" M threaded stainless lance pipes in various lengths:

48mm	070000488
63mm	070000638
100mm	070001008
120mm	070001197
150mm	070001508
330mm	070003228
433mm	070004338
500mm	070005008
600mm	070006008
1000mm	070010008
1500mm	070015008
2000mm	070020008



ST007 Stainless Steel Insulated Lances

1/4" M threaded stainless lance pipes with moulded insulation Available in various lengths. Max 400bar, 150°C

Length/Ins	
330/300	070003229
500/300	070005009
600/300	070006009
800/400	070008009
900/700	200129709
1000/400	070001009
1200/400	070012009
1500/500	070015009
2000/500	070020009



Twin Lances

Brass & zinc plated twin lances which allow the user to apply non foaming detergent, then use high pressure to rinse it off, all using the same lance. By twisting either the top or side valve, the user is able to select high or low pressure.

Max 250bar, 150°C

51660	Twin lance - top adjust valve
51760	Twin Lance - side adjust valve



ST85 Push-Pull Lances

The ST85 Push-Pull stainless steel lance is unique in it's ability to adjust its head angle by simply pulling the vented grip. Perfect for reaching those hard to reach areas. 210bar, 150°C

850mm ST85 1/4" F	200085810
1000mm ST85 1/4" F	200085800
1500mm ST85 1/4" F	200085850

Lance Accessories



ST11 Coloured Nozzle Protectors

Range of coloured plastic nozzle protectors, which are HACCP Compliant, allowing the user to minimise any cross contamination within their production areas. Ideal for use with a quick release probe and suitable nozzle.



Red	Green	Yellow	White	Blue	Grey	Black
020001121	020001122	020001123	010001124	020001149	020001157	020001158



Soft End

Hard Body

SS

Coloured Hard & Soft Nozzle Protectors

Hard body for rigidity and durability, and soft nozzle end to reduce any unwanted damage when dropped. Stainless steel 1/4" F

Black/Black	Blue/Black	Red/Black	Black/Grey	Blue/Grey	Black/Orange	Green/Black	Blue/Indigo
200010700	200010710	200010720	200010730	200010740	200010755	200010760	200010770

310 bar, 45lpm, 150°C



SS

Rotates 240°

Variable Angle & Pivoting Nozzle Holders

The variable angle holder can rotate 270°, which makes it perfect for putting on a lance to make sure you can clean those hard to reach areas. Angle locks in place at 20bar. The pivoting holder is designed to be fixed in place, then the required direction of flow from the nozzle can be selected.

- 200330500 Variable Angle Holder 1/4" F
- 519814140 Pivoting Nozzle Holder 1/4" M inlet, 1/4" F outlet

250 bar, 40lpm, 90°C



SS

Nozzle not included



SS

KW Quick Release Lance Spigots

For use with our range of quick release wash guns, these stainless steel spigots are available with either 1/4" F or 1/4" M threads.

- 040001255 1/4" F Threaded Spigot
- 040001256 1/4" M Threaded Spigot

Nozzle Chart



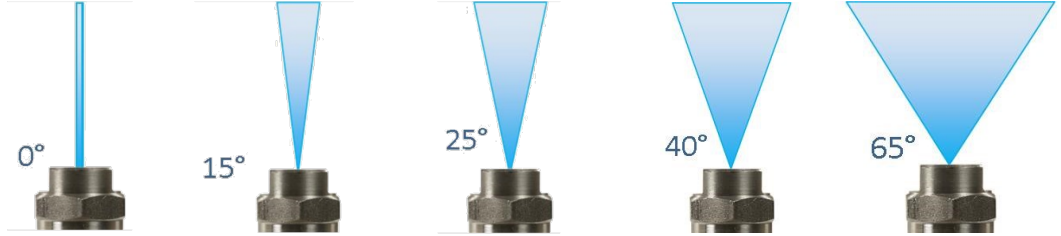
To select the correct nozzle size for your application, select the pressure you will be using, then go down the chart to the flow rate you have. Follow the row to the left to see which nozzle size this corresponds to. **90bar@14lpm = 065**

		Pressure (bar)																	Flow Rate	
		3	10	20	30	40	50	60	70	80	90	100	110	120	130	140	150	175		200
01	0.4	0.7	1.0	1.3	1.4	1.6	1.7	1.8	2.0	2.1	2.2	2.3	2.4	2.5	2.6	2.7	2.9	3.1	3.5	4.4
015	0.6	1.0	1.5	1.8	2.1	2.4	2.6	2.8	3.0	3.2	3.4	3.6	3.7	3.8	4.0	4.2	4.5	4.8	5.4	6.7
02	0.8	1.4	2.0	2.5	2.8	3.2	3.5	3.7	4.0	4.2	4.5	4.7	4.8	5.0	5.3	5.4	5.9	6.3	7.0	8.9
025	1.0	1.6	2.5	3.1	3.5	4.0	4.3	4.7	5.0	5.3	5.6	5.9	6.1	6.4	6.6	6.9	7.5	8.0	9.0	11.4
03	1.2	2.0	3.1	3.7	4.3	4.8	5.3	5.7	6.1	6.3	6.8	7.1	7.4	7.7	8.0	8.3	9.0	9.6	10.7	13.5
035	1.4	2.5	3.6	4.2	4.9	5.5	6.0	6.5	7.0	7.4	7.8	8.2	8.6	8.9	9.2	9.5	10.3	11.0	12.3	15.5
04	1.6	2.8	4.1	5.2	5.9	6.6	7.3	7.8	8.4	8.9	9.4	9.8	10.3	10.7	11.1	11.5	12.4	13.3	14.8	18.7
045	1.8	3.1	4.5	5.5	6.4	7.1	7.8	8.4	9.0	9.6	10.2	10.5	10.9	11.4	11.8	12.2	13.2	14.1	15.8	19.9
05	2.0	3.5	5.1	6.2	7.1	8.0	8.7	9.4	10.0	10.7	11.3	11.8	12.4	12.9	13.4	13.8	14.9	16.0	17.9	22.6
055	2.2	3.7	5.6	6.8	7.8	8.7	9.6	10.3	11.1	11.8	12.4	13.0	13.6	14.1	14.7	15.2	16.4	17.5	19.6	25.0
06	2.4	4.1	6.1	7.4	8.6	9.6	10.4	11.3	12.1	12.8	13.6	14.3	14.9	15.5	16.0	16.7	18.0	19.2	21.5	27.1
065	2.6	4.3	6.6	8.0	9.3	10.4	11.3	12.3	13.2	14.0	14.7	15.4	16.1	16.8	17.4	18.0	19.4	20.8	23.2	29.3
07	2.8	5.0	7.1	8.6	10.0	11.2	12.2	13.2	14.1	15.0	15.8	16.6	17.3	18.0	18.7	19.3	20.9	22.3	25.0	31.3
075	3.0	5.3	7.6	9.3	10.7	12.0	13.1	14.2	15.2	16.1	16.9	17.7	18.5	19.3	20.0	20.7	22.4	23.9	26.7	33.7
08	3.2	5.6	8.2	9.8	11.3	12.7	14.0	15.1	16.1	17.1	18.0	18.9	19.7	20.5	21.3	22.0	23.8	25.5	28.5	35.9
10	3.9	7.0	10.2	12.3	14.2	16.0	17.4	18.9	20.1	21.4	22.5	23.6	24.6	25.6	26.6	27.6	29.8	31.8	35.6	44.9
11	4.3	7.8	11.2	13.4	15.5	17.3	19.0	20.5	22.0	23.3	24.5	25.7	26.9	28.0	29.1	30.1	32.5	34.7	38.8	50.1
12	4.7	8.4	12.3	14.6	16.9	18.9	20.8	22.4	24.0	25.4	26.8	28.1	29.4	30.6	31.7	32.8	35.4	37.9	42.4	53.4
12.5	5.1	9.5	13.3	15.9	18.3	20.5	22.5	24.3	26.0	27.5	29.0	30.4	31.8	33.1	34.4	35.6	38.4	41.1	45.9	57.8
15	5.9	10.8	15.3	18.5	21.3	23.9	26.1	28.3	30.2	32.1	33.8	35.3	36.9	38.4	39.9	41.3	44.6	47.7	53.3	67.2
20	7.9	14.0	20.5	24.7	28.5	31.9	34.9	37.8	40.3	42.7	45.1	47.2	49.3	51.3	53.2	55.1	59.5	63.6	71.1	89.6
30	11.8	21.1	31.0	37.0	42.7	47.8	52.4	56.6	60.5	64.2	67.6	70.9	74.0	77.1	80.0	82.8	89.4	95.6	107.0	149.0
40	15.8	28.0	41.0	49.4	57.0	63.7	69.8	75.4	80.7	85.5	90.2	94.6	98.8	103.0	107.0	110.0	119.0	127.0	143.0	198.0
50	19.7	35.3	51.0	61.5	71.0	80.0	87.0	94.5	102.5	107.0	112.5	118.0	123.0	128.0	133.0	138.0	149.0	159.0	178.0	224.5



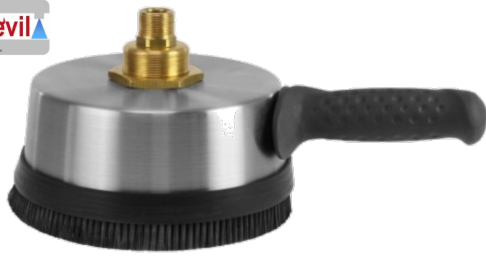
Nozzles

We offer a huge range of 304 stainless steel nozzles from stock, suitable for spray bars, high pressure cleaning and low pressure rinsing. Listed below are our most common sizes of 1/4" M nozzles. If there is a nozzle you are specifically looking for, but can't see it listed, please contact us, as we may have it in stock in our warehouse. 1/8" M and TIP nozzles are also available



Size	Thread	0°	15°	25°	40°	65°
01	1/4" M		1501ss			
015	1/4" M		15015ss			
02	1/4" M	61005	61305	61750	62030	62520
025	1/4" M	61007	61307	61765	62035	62525
03	1/4" M	61010	61310	61770	62100	62530
035	1/4" M	61020	15035ss	61780	62120	62535
04	1/4" M	61030	61330	61790	62130	62540
045	1/4" M	61040	15045ss	61800	62140	62550
05	1/4" M	61050	1505ss	61810	62150	62560
055	1/4" M	61060	15055ss	61820	62160	62570
06	1/4" M	61070	1506ss	61830	62170	62580
065	1/4" M	61080	61380	61840	62180	62590
07	1/4" M	61090	61390	61850	62190	62600
075	1/4" M	61100	61400	61860	62200	
08	1/4" M	61110	61410	61870	62210	62610
10	1/4" M	61140	61430	61900	62240	62630
11	1/4" M	61150	61440	61910	62250	
12	1/4" M	61160	61460	61920	62260	
12.5	1/4" M		61465			
15	1/4" M	61180	61480	61940	62280	62650
20	1/4" M	61190	61490	61950	62290	62660
30	1/4" M	61210	61510	61970	62320	62670
40	1/4" M	61215	61525	61980	62330	
50	1/4" M	61220	61535	61990	62332	

Surface Cleaners



WW160

160mm handheld wall cleaner. Sturdy stainless body with ergonomic soft side handle allow this unit to be used in multiple applications, where space is an issue or there are only small areas that require that extra attention. M22M inlet

WW160 Wall Cleaner 710100160



TD300 & TD410

300 & 400mm stainless steel rotary floor cleaners. 410mm version is also available with a 40mm vac port to allow for the removal of waste water.

300mm SS Surface Cleaner	521030300
410mm SS Surface Cleaner	521042400
410mm SS Surface Cleaner	521042500
+ Vac Port & Handle	



TD520

520mm stainless steel rotary floor cleaner. Twin arm spray bar for exceptional area coverage, 4 x 60mm castors for ease of manoeuvrability and a sturdy handle with grip. Gun connects to create another handle. 1/4" F Inlet, 2 x 1/4" F nozzles required.

520mm SS Surface Cleaner 521052400



AGR520

520mm stainless steel rotary floor cleaner with larger wheels (380mm rear, 180mm front) for use on rougher surfaces. Perfectly suited for use within the agricultural/abattoir environments.

Max 250bar, 22lpm, 90°C

520mm Large Wheel Cleaner 710100556



ST97

Stainless steel construction with variable pressure regulation, allowing for the introduction of a chemical. 4 x 80° 015 nozzle are supplied.

1/4" M Inlet

Max 250bar, 21lpm, 80°C

Part No: 200097500

ST97 WEED DEVIL

Stainless steel unit designed for the use of steam/hot water. Underneath the jets are well directed to stop any temperature loss and maximise cleaning efficiency. Swivelling lance allows for the use on sloping areas. Can be used to remove weeds, stubborn stains and other troublesome eyesores.

Max 350bar, 120°C

Part No: 200097700



Loose Hoses

HIGH



FOODJET 1500

125 bar, DN12 high pressure wash down hose with the added benefit of having a poultry and animal fat resistant synthetic cover. Suitable for hot water applications with a max 50/50 chemical mix. The surface is also extremely abrasion resistant.

This hose is perfect for use within the poultry processing industry. Complies with DIN EN854
Max 125bar, 150°C.

303601500 Foodjet 1500 Hose



FOODJET

Foodjet hose as a 12mm ID cleaning hose designed for the food industry according to EN854, and is particularly resistant to animal and poultry fats. Suitable for 50/50 chemical dilution rates. Smooth, anti abrasion rubber cover with textile braid and synthetic interior lining

Max 80bar, 150°C

30360 Foodjet DN12 Hose



BLUFOOD

Blufood hose has been designed for use with industrial foam applications, according to 2007/19/EC, 2002/72/EC and 10/2011 regulations. Suitable for contact with liquid food products. Smooth covered 5 layered PVC hose with a textile mesh braid

Max 50bar, 70°C

30370 Blufood DN12 Hose

MEDIUM



HYGIENE ULTRA 40

With Antimicrobial Cover

This 40 bar hose is available in a range of HACCP compliant colours. Hygiene Ultra 40 is also unique in that it comes with an antimicrobial cover, which stops bacterial growth and minimises the threat of cross contamination. Max 70°C.

Complies with regulation (EU) No 10/2011

HYG40B	Blue Cover	HYG40G	Green Cover
HYG40R	Red Cover	HYG40Y	Yellow Cover

LOW



Thermoclean AL20

Hot water cleaning hose with non staining, grease proof, detergent & disinfectant resistant food grade PVC cover.

Available with 12 or 19mm bore. Comes in a 50m coil.

20 bar @ 70°C.

GSAR2012	12mm x 50m
GSAR2019	19mm x 50m



FOODJET 1500

125 bar, DN12 high pressure wash down hose with the added benefit of having a poultry and animal fat resistant synthetic cover. Suitable for hot water applications with a max 50/50 chemical mix. The surface is also extremely abrasion resistant. This hose is perfect for use within the poultry processing industry. Complies with DIN EN854. Max 125bar, 150°C.



	Male x Male	Male x Female	Female x Female
10m	49044466109	49044576109	49044566109
15m	49044466159	49044576159	49044566159
20m	49044466209	49044576209	49044566209
25m	49044466259	49044576259	49044566259
30m	49044466309	49044576309	49044566309

HIGH

FOODJET

Foodjet hose as a 12mm ID cleaning hose designed for the food industry according to EN854, and is particularly resistant to animal and poultry fats. Suitable for 50/50 chemical dilution rates. Smooth, anti abrasion rubber cover with textile braid and synthetic interior lining. Max 80bar, 150°C



	Male x Male	Male x Female	Female x Female
10m	4900460109	4900576109	4900560109
15m	4900460159	4900576159	4900560159
20m	4900460209	4900576209	4900560209
25m	4900460259	4900576259	4900560259
30m	4900460309	4900576309	4900560309

BLUFOOD

Blufood hose has been designed for use with industrial foam applications, according to 2007/19/EC, 2002/72/EC and 10/2011 regulations. Suitable for contact with liquid food products. Smooth covered 5 layered PVC hose with a textile mesh braid Max 50bar, 70°C



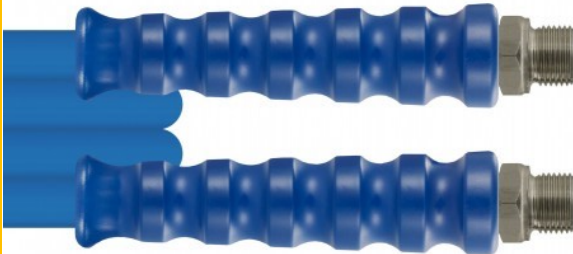
	Male x Male	Male x Female	Female x Female
10m	4750466109	4750576109	4750566109
15m	4750466159	4750576159	4750566159
20m	4750466209	4750576209	4750566209
25m	4750466259	4750576259	4750566259
30m	4750466309	4750576309	4750566309

MEDIUM

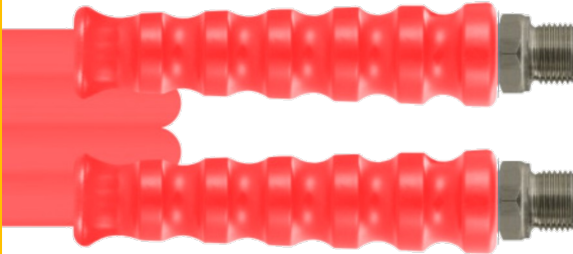


HYGIENE ULTRA 40 HOSE with Antimicrobial Cover

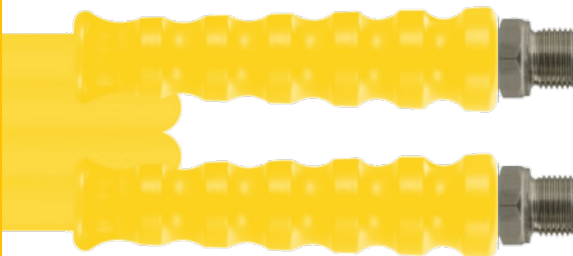
Hygiene Ultra 40 hose is a HACCP compliant, food grade hose which has an antimicrobial impregnated cover. The antimicrobial properties of this hose will stop the growth of micro-organisms, such as bacteria, therefore lowering the risk of cross contamination, and the spread of unwanted enzymes. Available in 4 colours and with a selection of threaded ends, these hoses are perfect for all of your low & medium pressure cleaning tasks. Max 40bar, 70°C. All hoses come fitted with 1/2" stainless steel ends, stainless steel ferrules and bend restrictors



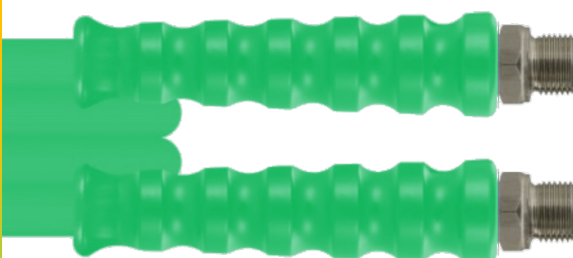
	Male x Male	Male x Female	Female x Female
10m	HUB10MM	HUB10MF	HUB10FF
15m	HUB15MM	HUB15MF	HUB15FF
20m	HUB20MM	HUB20MF	HUB20FF
25m	HUB25MM	HUB25MF	HUB25FF
30m	HUB30MM	HUB30MF	HUB30FF



	Male x Male	Male x Female	Female x Female
10m	HUR10MM	HUR10MF	HUR10FF
15m	HUR15MM	HUR15MF	HUR15FF
20m	HUR20MM	HUR20MF	HUR20FF
25m	HUR25MM	HUR25MF	HUR25FF
30m	HUR30MM	HUR30MF	HUR30FF



	Male x Male	Male x Female	Female x Female
10m	HUY10MM	HUY10MF	HUY10FF
15m	HUY15MM	HUY15MF	HUY15FF
20m	HUY20MM	HUY20MF	HUY20FF
25m	HUY25MM	HUY25MF	HUY25FF
30m	HUY30MM	HUY30MF	HUY30FF



	Male x Male	Male x Female	Female x Female
10m	HUG10MM	HUG10MF	HUG10FF
15m	HUG15MM	HUG15MF	HUG15FF
20m	HUG20MM	HUG20MF	HUG20FF
25m	HUG25MM	HUG25MF	HUG25FF
30m	HUG30MM	HUG30MF	HUG30FF

MEDIUM

Couplings & Adaptors



SS



Max: 10bar

316 Stainless Steel 150lb Fittings

Inlet	Outlet	Hexagon Nipple	Reducing Bush	Female Union	Socket	Female 90° Elbow	Male/Female Elbow	BSP Female Tee
1/4"	1/4"	ADP0005		ADP0050	ADP0060	ADP0070	ADP0080	ADP0090
1/4"	3/8"	ADP0006	ADP0030					
1/4"	1/2"	ADP0007	ADP0031					
3/8"	3/8"	ADP0008		ADP0051	ADP0061	ADP0071	ADP0081	ADP0091
3/8"	1/2"	ADP0009	ADP0032					
3/8"	3/4"	ADP0010	ADP0033					
1/2"	1/2"	ADP0011		ADP0052	ADP0062	ADP0072	ADP0082	ADP0092
1/2"	3/4"	ADP0012	ADP0034					
1/2"	1"	ADP0013	ADP0035					
3/4"	3/4"	ADP0014		ADP0053	ADP0063	ADP0073	ADP0083	ADP0093
3/4"	1"	ADP0015	ADP0036					
1"	1"	ADP0016		ADP0054	ADP0064	ADP0074	ADP0084	ADP0094
1"	1 1/2"	ADP0017	ADP0037					
1 1/2"	1 1/2"	ADP0018		ADP0055	ADP0065	ADP0075	ADP0085	ADP0095

High Pressure Stainless Steel Hose Adaptors

SS



Inlet	Outlet	Male x Male	Bulkhead & Nut	Male x Female	Bush	Female Socket	Female x Female	Male x Female 90°
1/8"	1/8"	57019						
1/8"	1/4"	57029			57519			
1/4"	1/4"	57049	GS5030	GS5010		51839		
1/4"	3/8"	57059		GS5011		040001023		
1/4"	1/2"	57069						
3/8"	1/4"			GS5012	57539			
3/8"	3/8"	57079	GS5031	GS5013		51849	GS5023	GS5051
3/8"	1/2"	57089		GS5014				
1/2"	1/4"				57549			
1/2"	3/8"				57559			
1/2"	1/2"	57099	GS5032	GS5017		51859		GS5052
1/2"	3/4"	57109						
3/4"	3/4"	57119				518559		
3/4"	1"	57129						
1"	1"	57139						

Quick Release Couplings

Stainless Steel Mini & Midi Quick Release Couplings



SS

Inlet	Mini Coupling F	Mini Coupling M	Mini Probe M Ø 11.6mm	Mini Probe F Ø 11.6mm	Midi Coupling	Midi Probe F Ø 14.8mm
Rating	220bar, 90°C	220bar, 90°C	220bar, 90°C	220bar, 90°C	220bar, 90°C	220bar, 90°C
1/4"	TPQNCSS		TPQNN14MSS	TPQNN14FSS		
3/8"		200245510			TPQNC38SS	TPQNN38FSS

ST45 Stainless Steel Quick Release Couplings (Tema Compatible)



SS

Inlet	Stainless Steel Coupling x Female Thread	Stainless Steel Coupling x Male Thread	Stainless Steel Probe x F Ø 20mm	Stainless Steel Probe x M Ø 20mm
Rating	250bar, 150°C	250bar, 150°C	250bar, 150°C	250bar, 150°C
1/4"				040005669
3/8"	200045565	200045595	557209	
1/2"	200045555		55729	557206

ST3100 Stainless Steel Quick Release Couplings



SS

Inlet	Stainless Steel Coupling x Female Thread	Stainless Steel Coupling x Male Thread	Stainless Steel Probe x F Ø 17.8mm	Stainless Steel Probe x M Ø 17.8mm
Rating	250bar, 150°C	250bar, 150°C	250bar, 150°C	250bar, 150°C
1/4"		203100652	040005465	
3/8"	203100456	203100473	040005467	040005459
1/2"	203100455	203100656	040005461	040005662



ST160 Foam Injectors

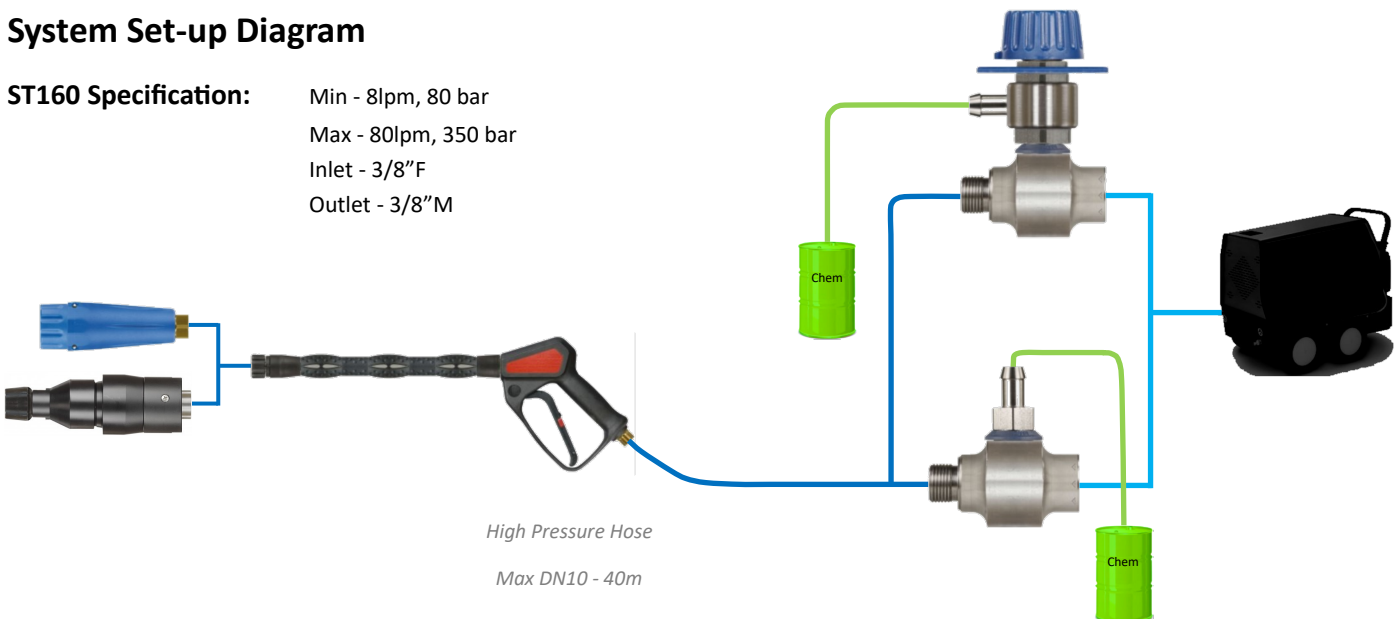
SS



Jet Size	ST160 + Fixed Metering Tips	ST160 + Adjustable Metering Valve	Suitable ST75 Foam Lance	Stainless Steel ST75	Suitable ST76 Foam Blaster Lance
Thread	3/8" F In, 3/8" M Out	3/8" F In, 3/8" M Out	1/4" F	1/4" F	1/2" F
1.2mm	200160499	200160600	200075574		
1.3mm	200160500	200160601	200075576		
1.4mm	200160505	200160602	200075577		
1.5mm	200160510	200160603	200075572		
1.6mm	200160515	200160604	200075572	200075514	
1.7mm	200160520	200160605	200075573	200075515	
1.8mm	200160525	200160606	200075578	200075516	
1.9mm	200160530	200160607	200075578	200075516	
2.0mm	200160535	200160608			200076615
2.1mm	200160540	200160609			200076615
2.2mm	200160545	200160610			200076615
2.3mm	200160550	200160611			200076618
2.5mm	200160560	200160613			200076621
2.8mm	200160575	200160614			200076630

System Set-up Diagram

ST160 Specification:
 Min - 8lpm, 80 bar
 Max - 80lpm, 350 bar
 Inlet - 3/8" F
 Outlet - 3/8" M



ST164 Foam Injectors

Lever operated unit allowing for the selection of two separate chemicals. With or without compressed air.

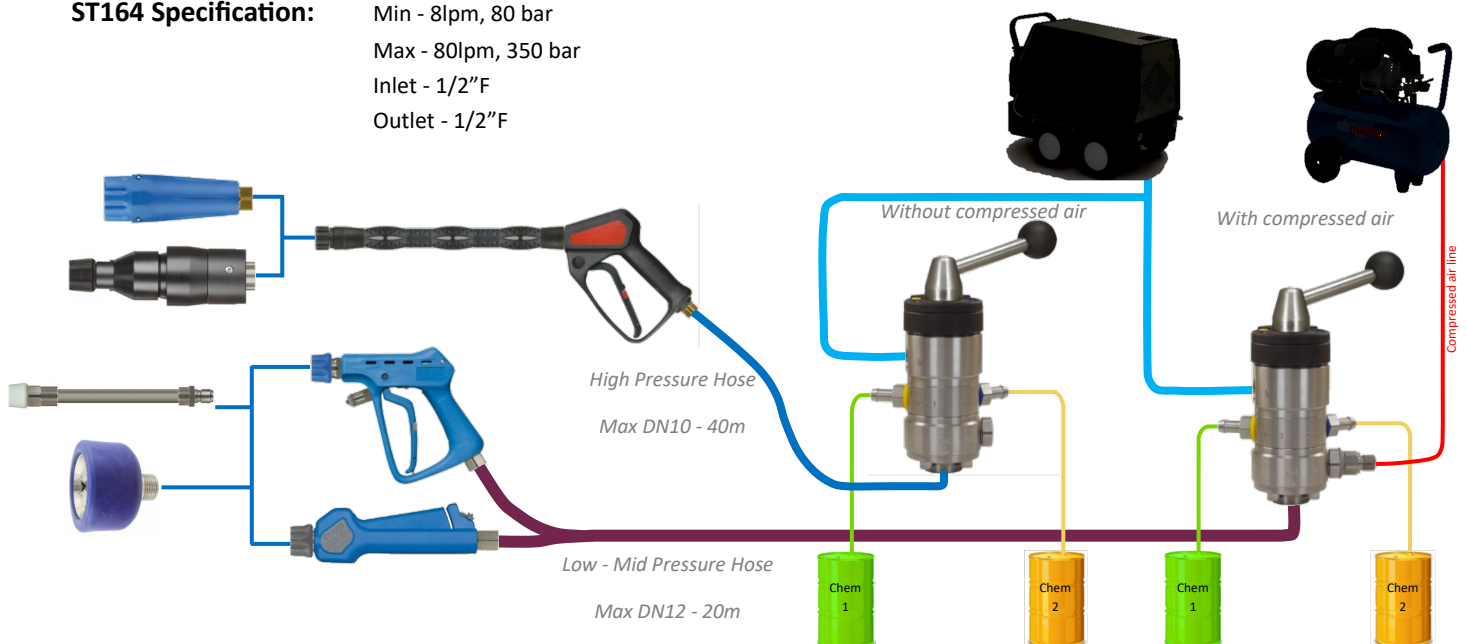
SS



Jet Size	ST164 without Compressed Air Module	ST164 + Compressed Air Module	ST164 + Air Module + Adj Metering Valves	ST164 Side Exit + Double Check Air Module
Thread	1/2" F	1/2" F	1/2" F	1/2" F
1.3mm	200164500	200164580	200164600	
1.4mm	200164502	200164582	200164602	
1.5mm	200164503	200164583	200164603	
1.6mm	200164504	200164584	200164604	
1.7mm	200164505	200164585	200164605	200164985
1.8mm	200164506	200164586	200164606	
1.9mm	200164507	200164587	200164607	
2.0mm	200164508	200164588	200164608	
2.1mm	200164509	200164589	200164609	
2.2mm	200164510	200164590	200164610	
2.3mm	200164511	200164591	200164611	
2.4mm	200164512	200164592	200164612	
2.5mm	200164513	200164593	200164613	
2.8mm	200164514	200164594	200164614	

System Set-up Diagram

ST164 Specification:
 Min - 8lpm, 80 bar
 Max - 80lpm, 350 bar
 Inlet - 1/2" F
 Outlet - 1/2" F





ST167 Foam Injectors

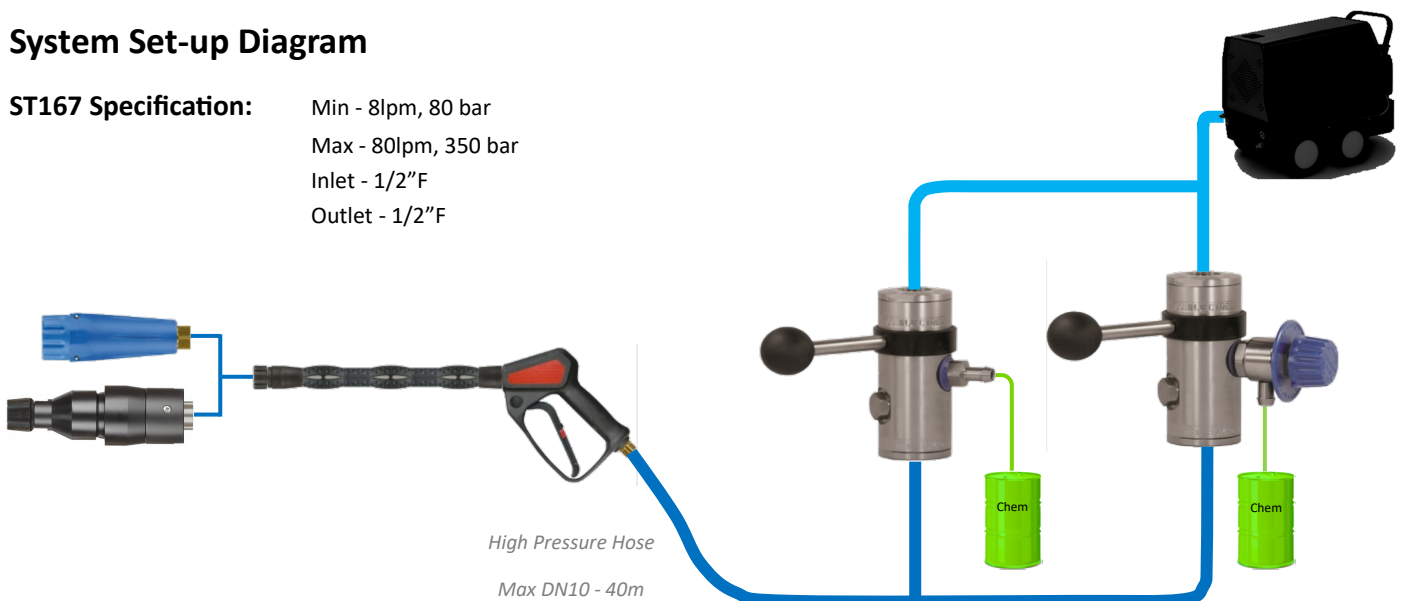
Lever operated selection of chemical or full flow clean water.



Jet Size	ST167 + Fixed Metering Tips	ST167 + Adjustable Metering Valve	Suitable ST75 Foam Lance	Stainless Steel ST75	Suitable ST76 Foam Blaster
Thread	1/2" F	1/2" F	1/4" F	1/4" F	1/2" F
1.3mm	200167501	200167601	200075576		
1.4mm	200167502	200167602	200075577		
1.5mm	200167503	200167603	200075572		
1.6mm	200167504	200167604	200075572	200075514	
1.7mm	200167505	200167605	200075573	200075515	
1.8mm	200167506	200167606	200075578	200075516	
1.9mm	200167507	200167607	200075578	200075516	
2.0mm	200167508	200167608			200076615
2.1mm	200167509	200167609			200076615
2.2mm	200167510	200167610			200076615
2.3mm	200167511	200167611			200076618
2.4mm	200167512	200167612			200076618
2.5mm	200167513	200167613			200076621
2.8mm	200167514	200167616			200076630

System Set-up Diagram

ST167 Specification:
 Min - 8lpm, 80 bar
 Max - 80lpm, 350 bar
 Inlet - 1/2" F
 Outlet - 1/2" F



ST168 Foam Injectors

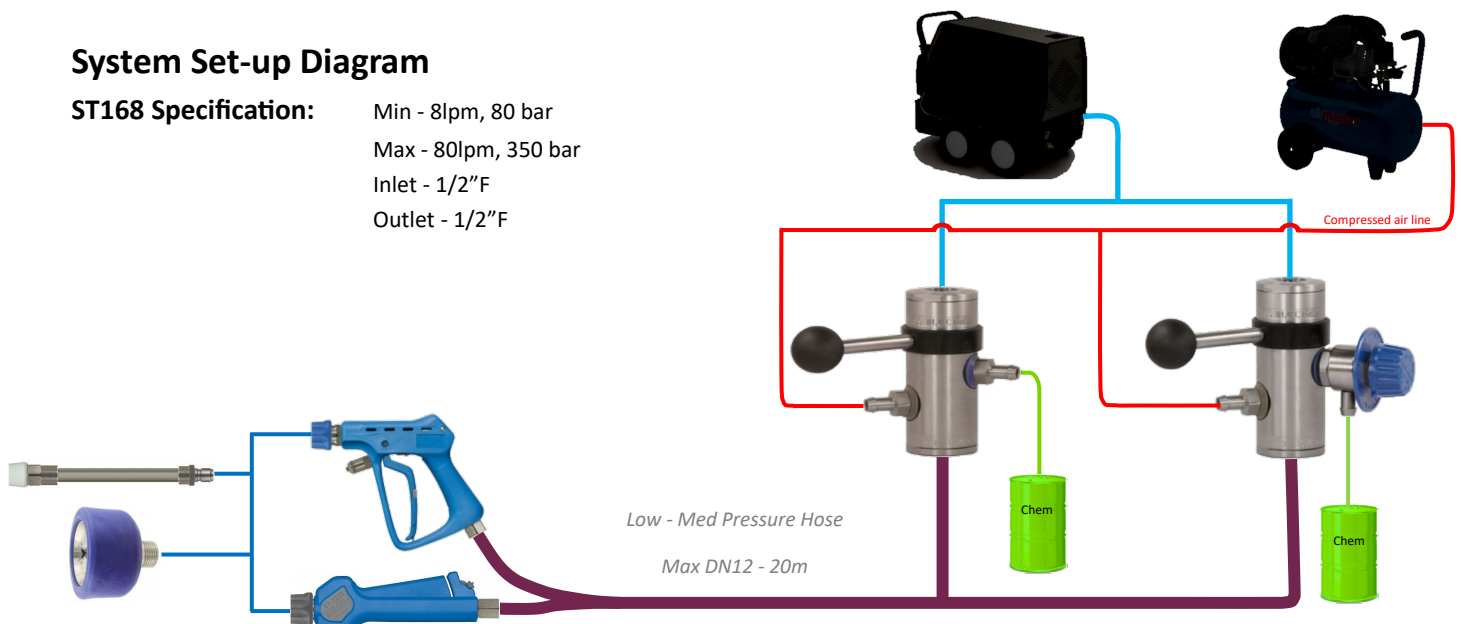
Lever operated selection of chemical or full flow clean water with added compressed air



Jet Size	ST168 + Fixed Metering Tips	ST168 + Adjustable Metering Valve	Suitable Foam Lance	Suitable 3 Function Nozzle: Foam/Disinfect/Rinse
Thread	1/2" F	1/2" F	ST3100 QR Plug	1/2" M
1.3mm	200168505	200168601	203100630	6576500
1.4mm	200168515	200168602		
1.5mm	200168525	200168603		
1.6mm	200168535	200168604		
1.7mm	200168545	200168613		
1.8mm	200168555	200168606		
1.9mm	200168605	200168607		
2.0mm	200168615	200168608		
2.1mm	200168625	200168609		
2.2mm	200168635	200168610		
2.3mm	200168645	200168611		
2.4mm	200168650	200168612		
2.5mm	200168655	200168616		
2.8mm	200168660	200168617		

System Set-up Diagram

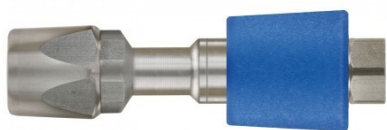
ST168 Specification:
 Min - 8lpm, 80 bar
 Max - 80lpm, 350 bar
 Inlet - 1/2" F
 Outlet - 1/2" F



Foam Lances & Nozzles

ST75 Foam Lance

The ST75 foam lance is the perfect partner for the majority of injectors that we offer. Can be attached to any length of lance and still give the same fantastic results. 1/4" F Inlet, Max 310bar, 100°C



Use with:



ST160

ST164
(no air)

ST167

Nozzle Size	Standard Head	Stainless Steel Version
04	200075574	
05	200075576	
06	200075577	
075	200075572	200075514
085	200075575	
10	200075573	200075515
13	200075578	200075516



ST75.2 Long Cast Foam Lance

Need to throw the foam that little bit further? The ST75.2 long cast lance allows you to project the jet further, whilst being able to also adjust the quality of the foam through the adjustable air intake.

1/4" F Inlet, Max: 150 bar, 90°C



Use with:



ST160

ST164
(no air)

ST167

Nozzle Size	Flow Rate Range (lpm)	Part No
07	> 11	200075800001
075	12-14	200075800002
10	14-17	200075800003
13	18-20	200075800004
15	21-22	200075800005
15	23-27	200075800006
20	28-30	200075800007
20	31-40	200075810001

ST76 Foam Blaster

Designed for high flow applications (20-60lpm). Contains 3x internal nozzles to give exceptional results. 1/2" F, Max 250bar, 100°C



Use with injectors 2.0 & above:



ST160

ST164
(no air)

ST167

Nozzle Size	Part No
15 - (3 x 05)	200076615
18 - (3 x 06)	200076618
21 - (3 x 07)	200076621
22.5 - (3 x 075)	200076600
24 - (3 x 08)	200076624
30 - (3 x 10)	200076630
33 - (3 x 11)	200076633

Foam Lances & Nozzles



ST72 Foam Lance

Stainless steel foam lances in either 600 or 1200mm lengths.
1/4" M inlet. Max 250bar, 80°C



Use with:



ST160



ST164
(no air)

ST167

Flow	600mm	1200mm
>11lpm	200072633	200072634
11-15lpm	200072625	200072626
15lpm+	200072629	200072631

ST3100 Foam Lances

Use where compressed air has been put into the system.
50°200 Nozzle, ST3100 QR Probe



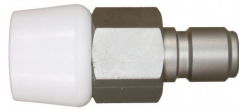
Use with:



ST164
with air



ST168



Length	Part No
50mm	502808
300mm	203100630

Triple Nozzle

Rubber shrouded stainless steel treble nozzle. Rotate the housing for the selected nozzle. Perfect for use where compressed air has been injected into the system.

Foam (50° 150), Rinse (25°15) & Sanitise(60°30)



Use with:



ST164
with air



ST168

Triple Nozzle	1/2" M	6576500
---------------	--------	---------



Foam & Chemical Trolleys



Multifunctional Foam Trolley

Stainless steel trolley designed to allow for the mounting of hose reels & foam injectors, whilst still being able to carry chemical drums. Also comes with 2 x built in lance holders

Part No	710000163389
Height	1150mm
Width	540mm
Length	620mm



3 Wheeled Multifunction Foam Trolley

Three wheeled trolley for added mobility. Designed to fit the ST160, 164, 167 & 168 injectors, as well as being able to carry two chemical drums. Comes also with two built in lance holders

Part No	200163389
Height	1080mm
Width	680mm
Length	760mm



Small Hose Reel Trolley

Made in the UK from 304 stainless steel, and designed to fit the 73950 manual hose reel.

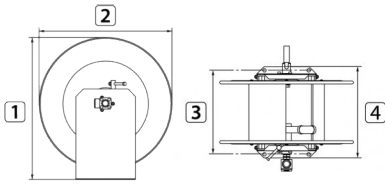
Trolley Only	TPHT02
Trolley & Reel	TPTHR01
Height	980mm
Width	480mm
Length	550mm



Large Hose Reel Trolley

Suitable to fit the 73950, 73960 & 7396019 hose reels

Trolley Only	712000070
Height	1175mm
Width	700mm
Length	650mm



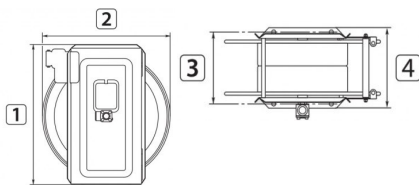
Part No	1	2	3	4	Weight
73950	515mm	465mm	280mm	312mm	10.5kg
73960	515mm	465mm	480mm	512mm	13.5kg
73965	515mm	465mm	680mm	712mm	15.7kg
7397012	515mm	465mm	780mm	812mm	16.8kg
7935019	515mm	465mm	480mm	512mm	14.7kg

Stainless Steel Manual Hose Reels

Range of stainless steel manual rewind hose reels with locking mechanism. Available with 1/2" F or 3/4" F ports and inlet swivels.



Hose Size	Capacity	Inlet	Outlet	Rating	Part No
DN12	35m	1/2" F	1/2" F	300 bar, 90°C	73950
	70m	1/2" F	1/2" F	300 bar, 90°C	73960
	100m	1/2" F	1/2" F	300 bar, 90°C	73965
	115m	1/2" F	1/2" F	300 bar, 90°C	7397012
DN19	40m	3/4" F	3/4" F	200 bar, 90°C	7935019



Part No	1	2	3	4	Weight
74014	440mm	400mm	176mm	206mm	14kg
74020	500mm	460mm	176mm	206mm	16kg
74030	500mm	460mm	226mm	256mm	18kg
7040	500mm	460mm	276mm	306mm	25kg
74060	500mm	460mm	376mm	406mm	32.5kg
7402012	500mm	460mm	176mm	206mm	16kg
7404012	500mm	460mm	276mm	306mm	25kg
7404019	500mm	460mm	376mm	406mm	26.5kg

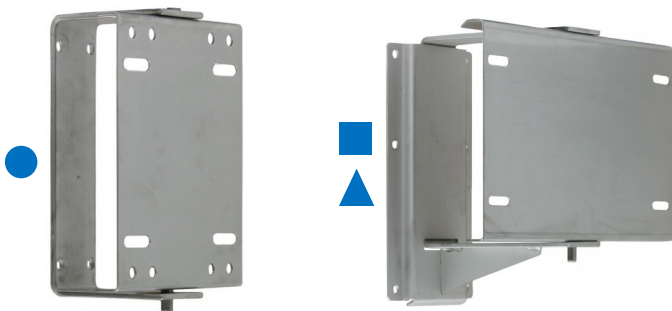
Stainless Steel Automatic Hose Reels

Range of stainless steel automatic rewind hose reels. Suitable for a host of applications and especially good at keeping hoses off the floor, reducing the risk of trips. Available with 3/8", 1/2" & 3/4" F ports and inlet swivels. Locking bolt at the side allows for safe maintenance whilst under tension.



Hose Size	Capacity	Inlet	Outlet	Rating	Part No	Bracket
DN8/10	14/12m	3/8" F	3/8" F	400 bar, 90°C	74014	●
	20/17m	3/8" F	3/8" F	400 bar, 90°C	74020	●
	30/26m	3/8" F	3/8" F	400 bar, 90°C	74030	■
	40/35m	3/8" F	3/8" F	400 bar, 90°C	74040	■
	55/48m	3/8" F	3/8" F	400 bar, 90°C	74060	▲
DN12	17m	1/2" F	1/2" F	300 bar, 90°C	7402012	■
	35m	1/2" F	1/2" F	300 bar, 90°C	7404012	■
DN19	35m	3/4" F	3/4" F	200 bar, 90°C	7404019	▲

Stainless Steel, Wall Mounted Swivel Brackets for Automatic Hose Reels



Swivel Bracket	Part No
●	74101
■	741011
▲	741012

Hose Reels

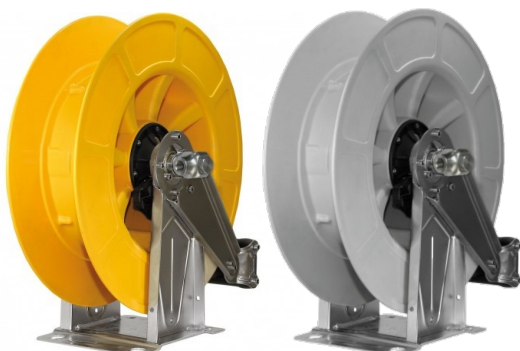


RM434	Capacity	Part No
DN8	21m	76343430
DN10	16m	
DN12	14m	
Tech Spec		300 bar, 90°C
Inlet & Outlet		1/2" F
Swivel Bracket		●

RM534	Capacity	Part No
DN8	30m	76353430
DN10	26m	
DN12	24m	
Tech Spec		300 bar, 90°C
Inlet & Outlet		1/2" F
Swivel Bracket		■

RM544	Capacity	In/out	Part No
DN12	30m	1/2" F	76354430
DN19	17m	1" F	76354420
Tech Spec		1/2" = 300 bar, 90°C 1" = 100 bar, 90°C	
Swivel Bracket		▲	

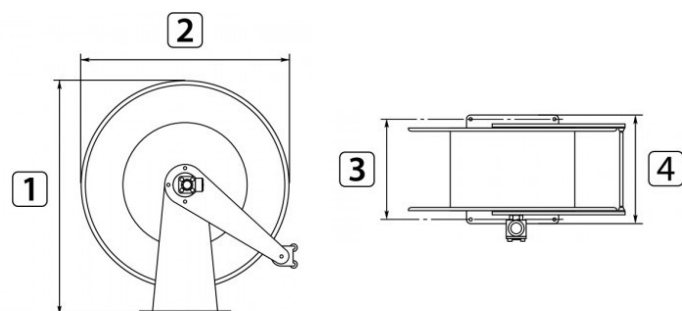
ABS & Stainless Auto Rewind Reels



RM434	Capacity	Yellow Reel	Grey Reel
DN8	21m	76343430	76443431
DN10	16m		
DN12	14m		
Tech Spec		300 bar, 90°C	
Inlet & Outlet		1/2" F	
Swivel Bracket		●	

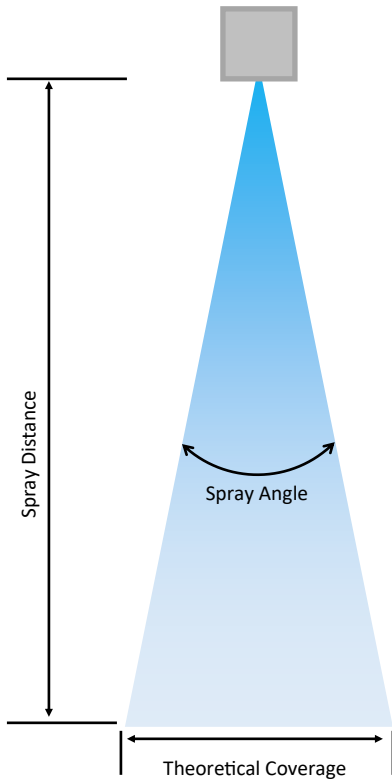
Code	Fits	Part No
●	RM434	76343006
■	RM534	76353006
▲	RM544	76354006

Hose Reel Dimensions



	RM434	RM534	RM544
1	460mm	560mm	573mm
2	420mm	510mm	510mm
3	140mm	153mm	218mm
4	186mm	203mm	300mm

Technical Information



The table below shows the theoretical coverage based on the spray angle and distance from the subject to be cleaned. The values are based on the assumption that the spray angle remains the same throughout the entire spray distance. In actual practice, the spray angle does not hold for longer spray distances. All measurements are in centimetres and are based on the standard flat fan nozzles.

Spray Angle	Distance from subject to be cleaned									
	10cm	15cm	20cm	25cm	30cm	40cm	50cm	60cm	80cm	100cm
5°	0.9	1.3	1.8	2.2	2.6	3.5	4.4	5.2	7	8.7
15°	2.6	4	5.3	6.6	7.9	10.5	13.2	15.8	21.1	26.3
25°	4.4	6.7	8.9	11.1	13.3	17.7	22.2	26.6	35.5	44.3
40°	7.3	10.9	14.6	18.2	21.8	29.1	36.4	43.7	58.2	72.8
65°	12.7	19.1	25.5	31.9	38.2	54	63.7	76.5	102	127
80°	16.8	25.2	33.6	42	50.4	67.1	83.9	101	134	168
110°	28.6	42.9	57.1	71.9	85.7	114	143	171	229	286
Coverage (cm)										

The below table shows the pressure loss in bar, that can be expected depending on the hose length and the internal bore of the hose. The figure listed is for the total pressure loss per length, not per meter.

Hose Length	Hose Length				
	DN6 - 1/4"	DN8 - 5/16"	DN10 - 3/8"	DN12 - 1/2"	DN19 - 3/4"
1m	0.08				
2m	0.3	0.13			
4m	1.2	0.53			
8m	4.9	2.0	0.68		
10m	8.8	3.4	1.0	0.45	
15m	26.6	9.9	2.7	1.0	
20m	61.6	22.6	6.2	2.3	0.36
30m		64.8	17.8	6.8	0.95
40m			40	15.2	2.0
50m			70	27.8	3.8
60m			116	45.4	6.7
70m				67.9	10.8
80m				100	16
100m					27.4
Pressure Loss					

